

# How the USACE's Overall Hurricane Response Efforts Have Evolved, and the Specific Response and Observations Following Hurricane Matthew

Jason Engle, P.E.

Kevin Hodgens, P.E.

Jennifer Coor, Ph.D., P.G.

USACE – Jacksonville District

8 February 2017

*Trusted Partners Delivering Value Today  
for a Better Tomorrow*



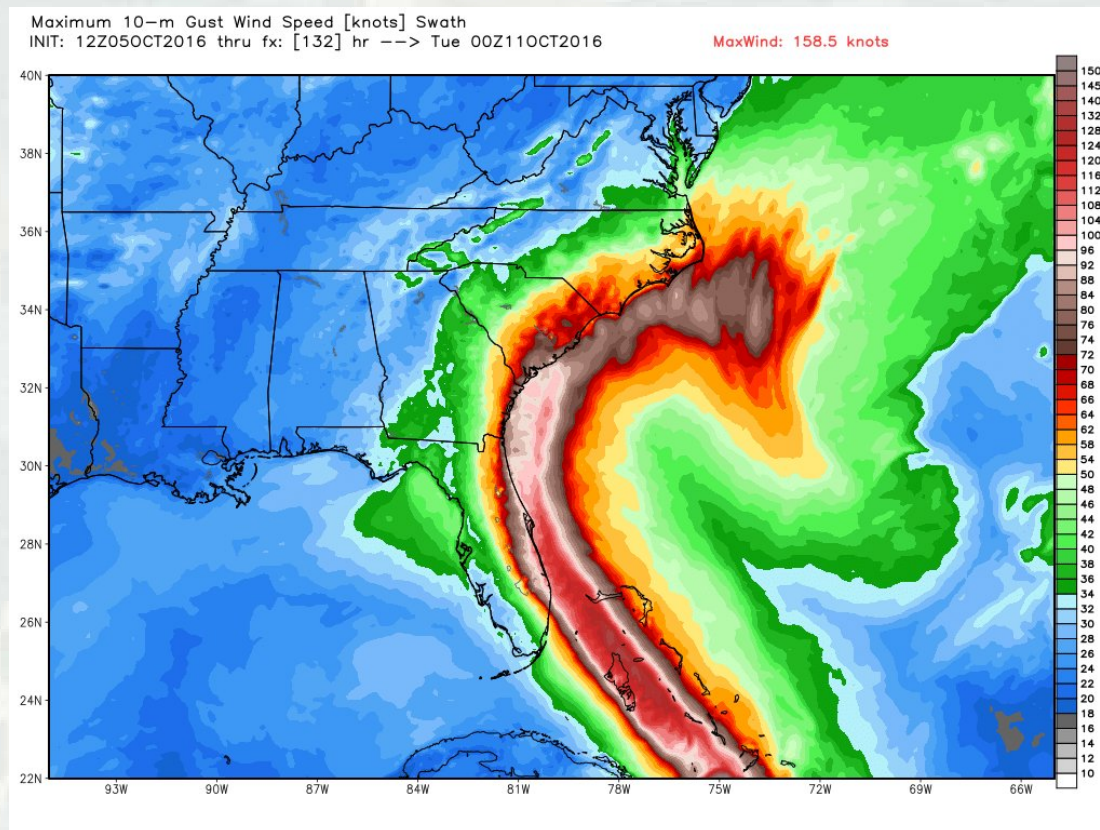


# Agenda



BUILDING STRONG

- Storm Overview
- USACE/FEMA project inspection mission
- Federal project impacts
- Lessons learned



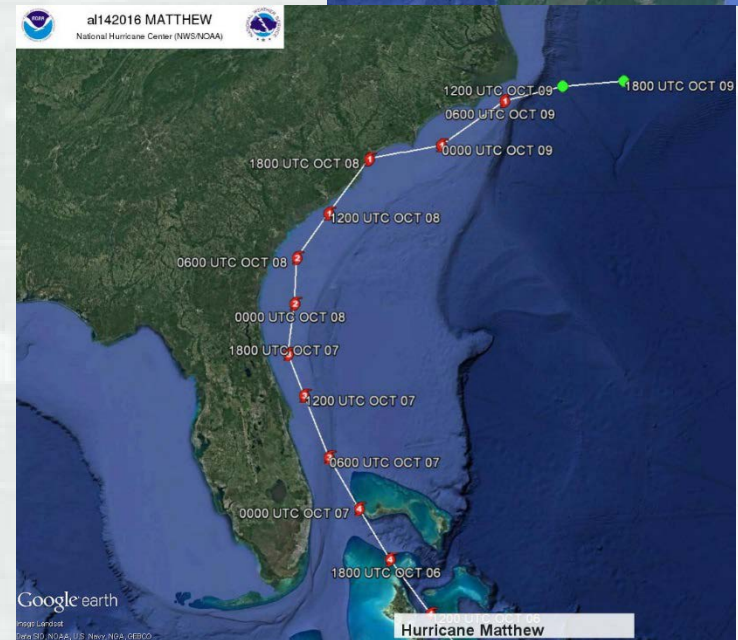
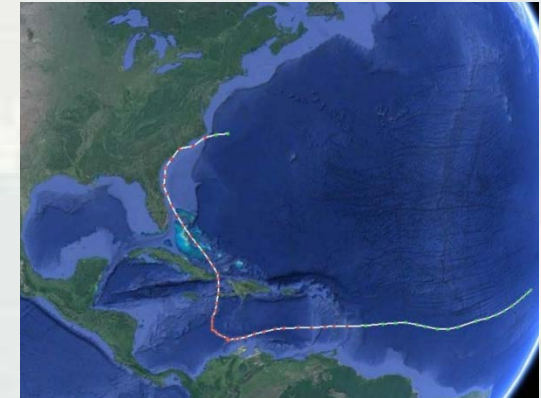


# Storm Chronology



BUILDING STRONG

- Tracked from 24 September to 09 October
- TS - 28 September
- Hurricane - 29 September
- Major Hurricane - 30 September
- Cat 5 - 01 October
- Landfall – Haiti 04 October
- Landfall – Cuba 05 October
- Impacts – Bahamas 06 - 07 October
- Off FL Coast – 07 October as Cat 4/3
- Off GA Coast – 08 October as Cat 2
- Landfall – 08 October as Cat 1
  - ▶ McClellanville, SC north of Charleston
- Off NC Coast – 09 October as Cat 1





# Extraordinary Storm



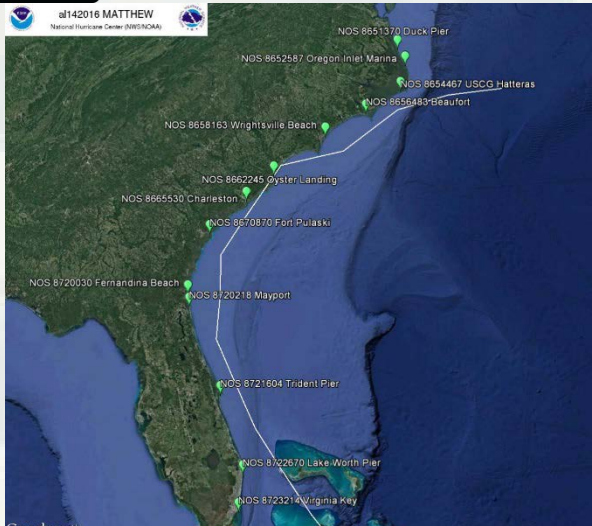
BUILDING STRONG

- ER 500-1-1 Paragraph 5-20(e)
  - ▶ To be eligible for Rehabilitation Assistance, *the HSPP must be substantially eroded/damaged by wind, wave, or water action of an other than ordinary nature.* USACE defines this as an “extraordinary storm”. An extraordinary storm is a storm that, due to *length or severity*, creates weather conditions that cause significant amounts of damage to a Hurricane/Shore Protection Project
  
- ER 500-1-1 Paragraph 5-20(e)(1)
  - ▶ “Length or severity” refers to a **Category 3 or higher** hurricane as measured on the Saffir-Simpson scale, or a storm that has an exceedance frequency equal to or greater than the design storm of the project.
  
- Matthew was extraordinary storm
  - ▶ Category 4/3 in FL
  - ▶ WL and Wave data support Extraordinary for GA, SC, NC



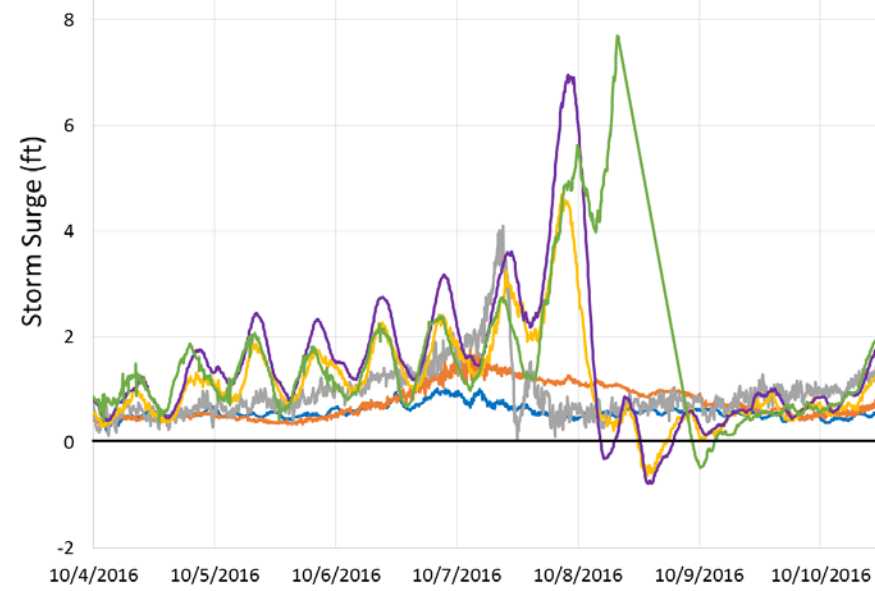
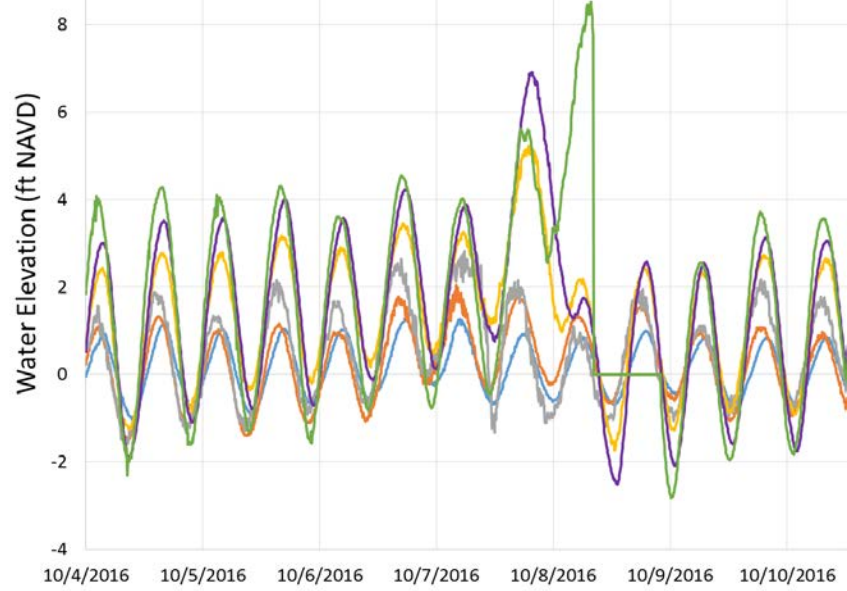
U.S. ARMY

# Verified Water Levels



NOS Station	Location	Peak Water Level (ft NAVD88)	Storm Surge (ft)	Duration of Surge > 1 ft (hours)	Exceedance Probability Level (ft NAVD88)	
					100 Yr	10 Yr
8723214	Virginia Key, FL*	1.3	1.0	0.2	N/A	N/A
8722670	Lake Worth Pier, FL*	2.1	1.8	42.1	N/A	N/A
8721604	Trident Pier, FL	2.8	4.1	61.7	N/A	N/A
8720218	Mayport, FL*	5.2	4.7	81	4.6	4.1
8720030	Fernandina, FL	6.9	7.0	95.7	6.8	5.5
8670870	Fort Pulaski, GA	8.5	7.7	96.2	7.0	6.2
8665530	Charleston, SC	6.2	6.2	97.1	7.1	5.5
8662245	Oyster Landing, SC*	7.1	5.5	84.2	N/A	N/A
8658163	Wrightsville Beach, NC	4.4	3.1	88.5	N/A	N/A
8656483	Beaufort, NC*	3.6	3.0	84.6	6.0	4.3
8654467	USCG Station Hatteras, NC*	6.0	6.0	133.6	N/A	N/A
8652587	Oregon Inlet Marina, NC*	2.9	2.6	71	N/A	N/A

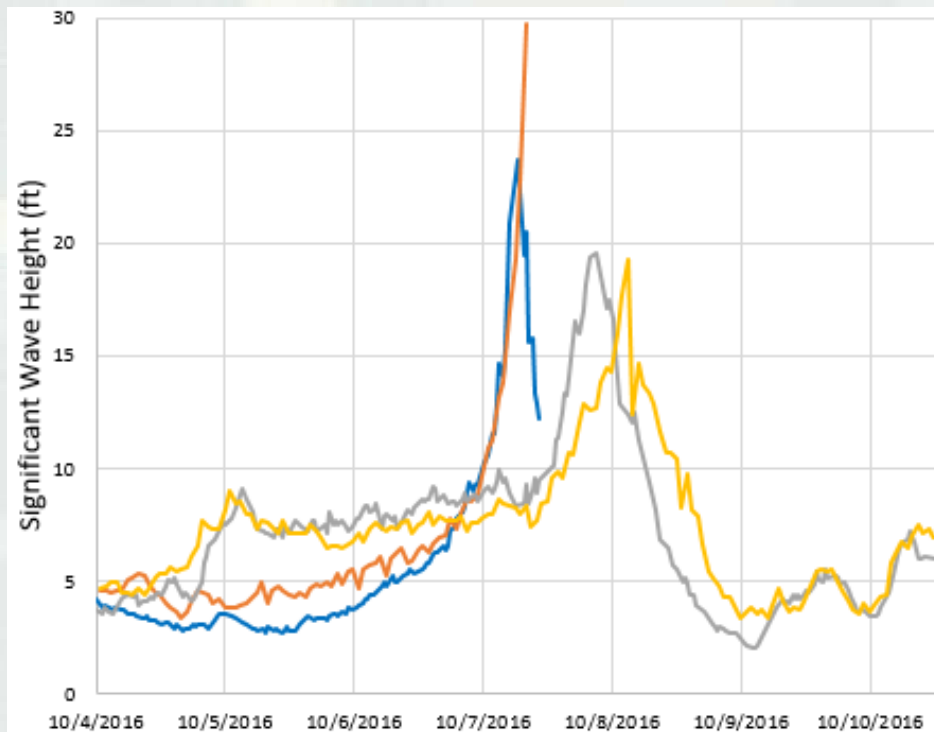
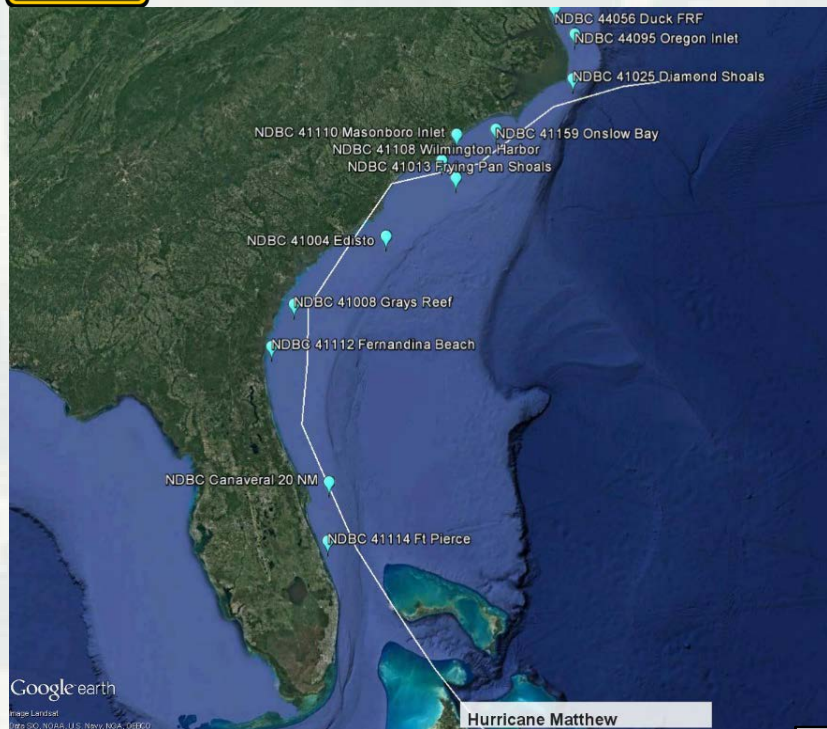
— 8723214 Virginia Key 
 — 8722670 Lake Worth Pier 
 — 8721604 Trident Pier 
 — 8720218 Mayport 
 — 8720030 Fernandina 
 — 8670870 Fort Pulaski





U.S. ARMY

# Significant Wave Height



— 41114 Ft. Pierce — 41009 Canaveral — 41112 Fernandina — 41008 Grays Reef

NDBC (Observed)					WIS (1980 - 2014 simulated)				Rank in WIS Record
ID	Location	Water Depth (ft)	Maximum Significant Wave Height (ft)	Duration of Waves > 9.8 ft (3m)	Station	Water Depth (ft)	Max Wave Height in record (ft)	100 Yr Wave Height (ft)	
41114	Ft. Pierce	53.0	23.7	17.0	63449	62.3	24.0	28.9	2
41009	Canaveral	132.9	29.8	8.0	63436	82.0	28.3	32.1	1
41112	Fernandina	51.0	19.6	25.0	63401	55.8	18.5	21.7	1
41008	Grays Reef	60.0	19.3	21.0	63383	55.8	19.1	22.6	1

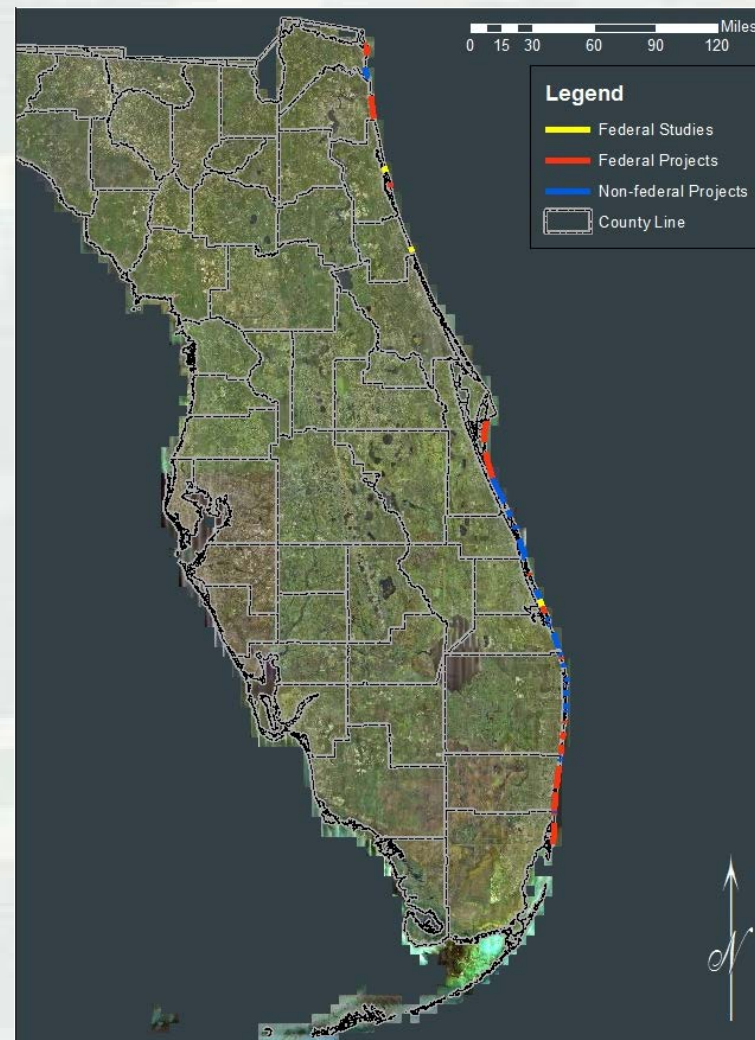


# Preliminary Damage Assessments, Federal and Non-Federal Beaches



BUILDING STRONG

- Assessment area
  - ▶ Federal projects: Nassau Co to Miami-Dade Co
  - ▶ Joint deployment with FDEP: Duval Co – St Lucie Co
- Federal projects
  - ▶ Visual inspections
  - ▶ USACE funded
  - ▶ Damages assessed to full design template
- Non-federal engineered beaches
  - ▶ Visual inspections
  - ▶ FEMA funded
  - ▶ Damages assessed above MHWL



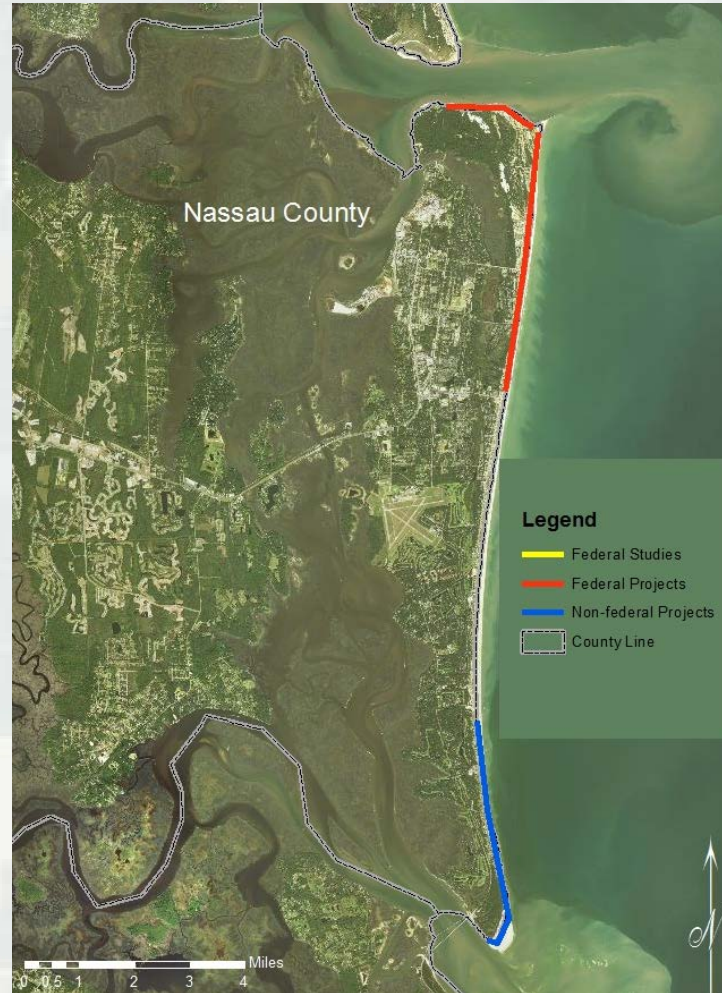


# Nassau County



BUILDING STRONG

- Federal Projects
  - ▶ King's Bay Entrance Channel O&M (R-1 to R-9)
  - ▶ Nassau County SPP (R-9 to R-33)
- Non-federal Projects
  - ▶ Amelia Island (R-60 to R-80)





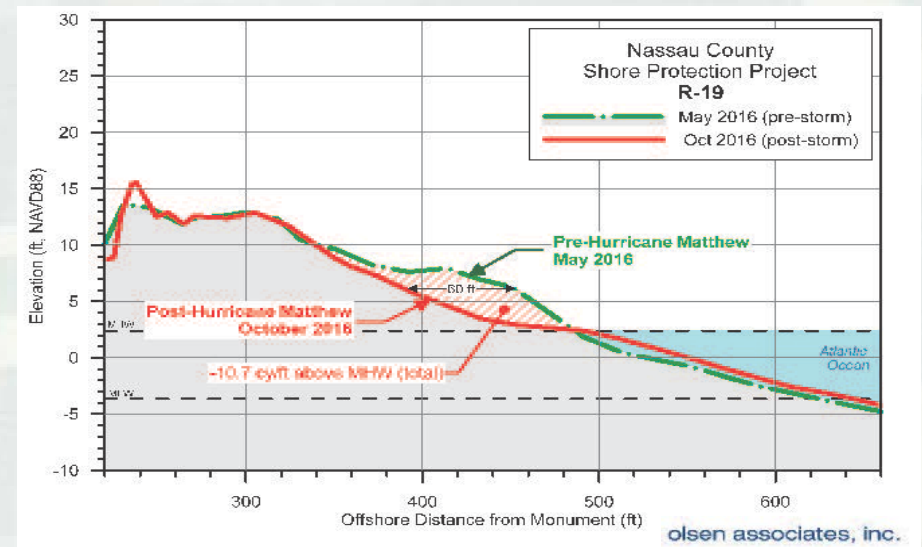


# Nassau Co SPP



**BUILDING STRONG**

Pre-to-post storm Volume Loss (CY)	Post-storm to design template (CY)	Pre-to-post storm Volume Loss within design template (CY)	Post-storm to construction template (CY)
152,828	203,327	53,340	369,788



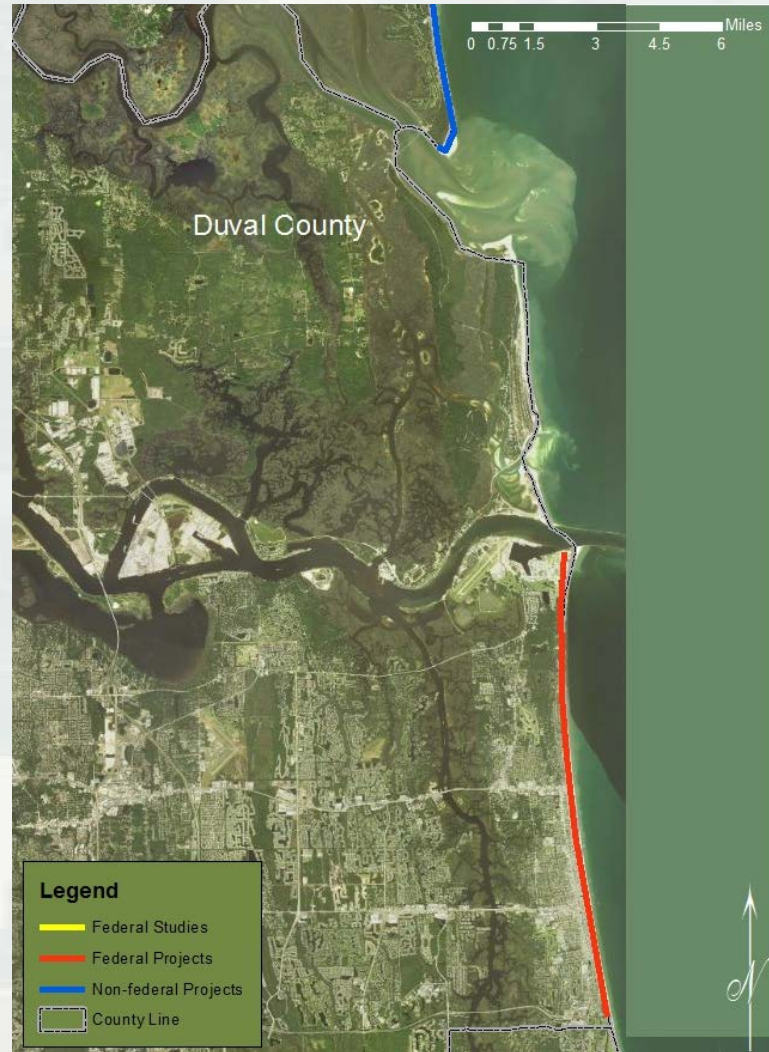


# Duval County



BUILDING STRONG

- Federal Projects
  - ▶ Duval County SPP (V-501 to R-80)





# Duval Co SPP



**BUILDING STRONG**



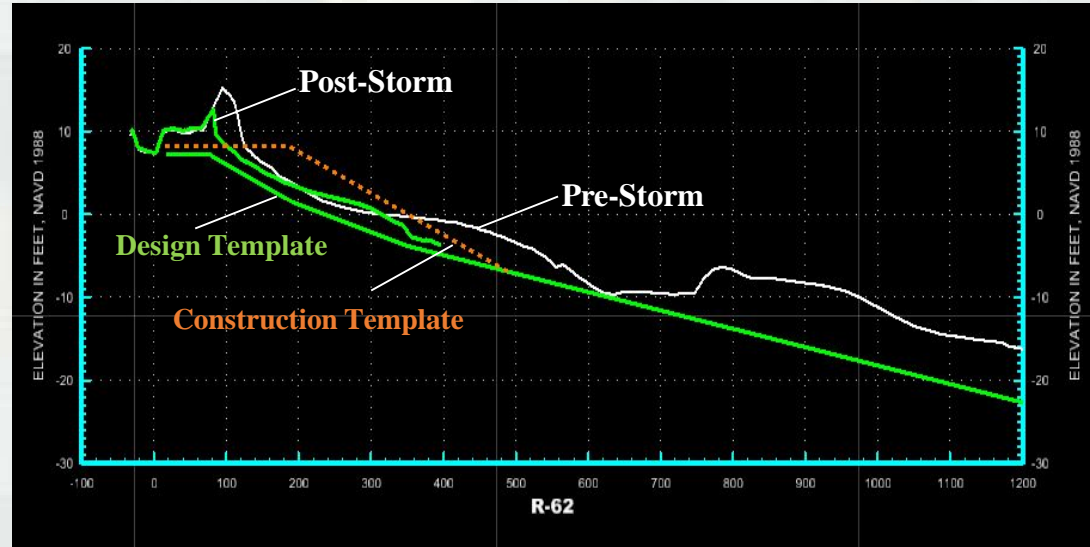


# Duval County SPP



BUILDING STRONG

- Construction of the 6<sup>th</sup> periodic nourishment began on 18 Sep 2016
- Planned 700,000 cy between R-45 and R-80
- Completed 160,000 cy between R-72 to R-80 prior to Matthew



Project Segment	R-monuments	Pre- to Post-Storm Overall Loss (CY)	Post-Storm to Design Template (FCCE volume) (CY)	Post-Storm to Construction Template (CY)	Dune Loss (CY)
NAS Mayport	V-501 to R-31	60,000	500	3,500	9,000
Hannah Park & North end of Atlantic Beach	R-31 to R-45	175,000	500	26,500	90,000
Atlantic, Neptune, & Jax Beaches (6th periodic nourishment contract)	R-45 to R-80	365,000	6,500	710,000	210,000
<b>Total</b>	<b>V-501 to R-80</b>	<b>600,000</b>	<b>7,500</b>	<b>740,000</b>	<b>309,000</b>



# St. Johns County



BUILDING STRONG

- Federal Projects
  - ▶ Feasibility Study (Vilano Beach, R-102 to R-117)
    - 60 ft berm plus dune
    - ~1.31 million CY initial construction
    - 866k CY/12 year periodic nourishment
    - Chief's Report scheduled June 2017
  - ▶ Existing project, St. Johns SPP (St. Augustine Beach, R-137 to R-150)





# Vilano Beach (Feasibility Study Area)



**BUILDING STRONG**





# St. Johns SPP



**BUILDING STRONG**



Pre-to-Post Storm Volume (CY)	Pre-Storm to Authorized Design Template (CY)	Post-Storm to Authorized Design Template (CY)	Difference in Authorized Design Template Pre to Post (CY)	Construction Template (CY)
217,512	33,851	62,045	-28,194	775,000



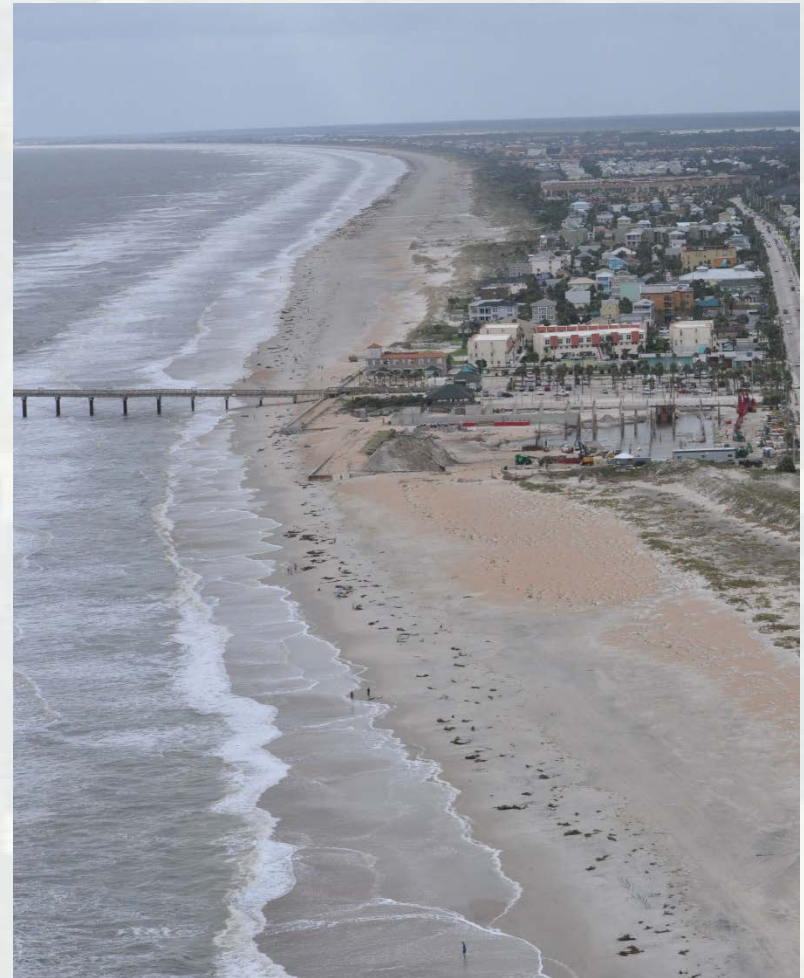
# St. Johns Erosion Comparison



BUILDING STRONG

St. Johns SPP

St. Johns Feasibility







# Flagler County

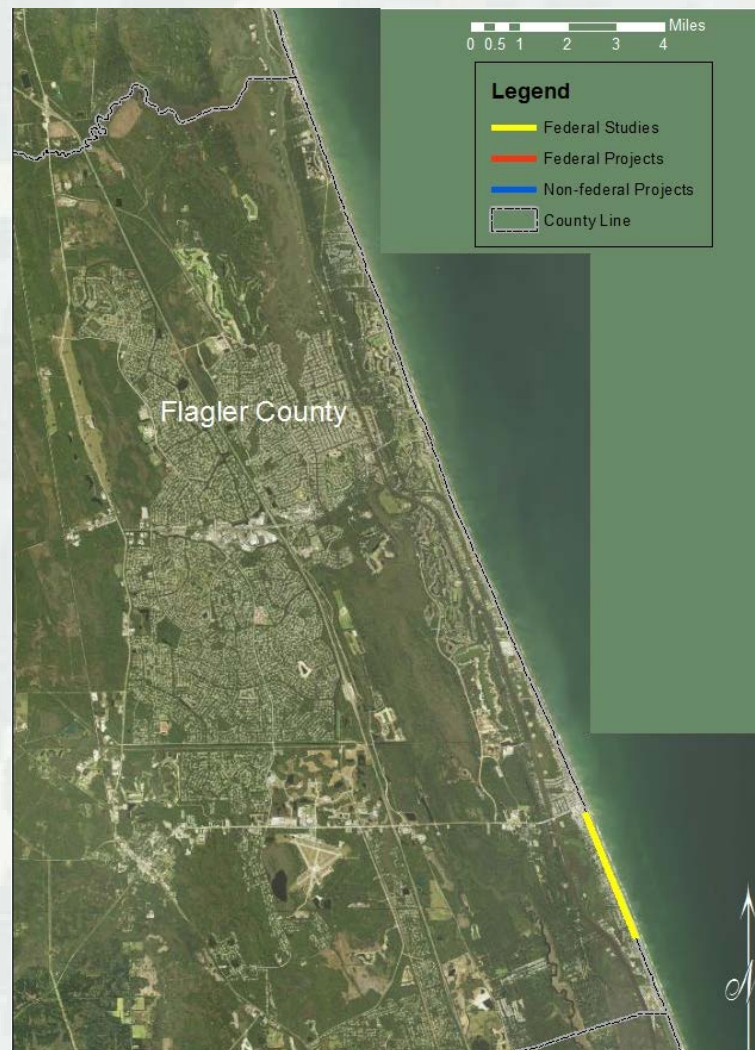


BUILDING STRONG

## Federal Project

Authorized Hurricane and Storm Damage Reduction Project, (Flagler Beach, R-80 to R-94)

- 10 ft dune and beach profile extension
- 330 kcy initial construction
- 320 kcy periodic nourishment
  - ▷ 11 year intervals
- WRDA/WIIN 2016 Authorization
- Initial Construction awaiting appropriation





# Flagler Co HSDR



BUILDING STRONG

Flagler County, Florida  
Hurricane and Storm Damage Reduction Project



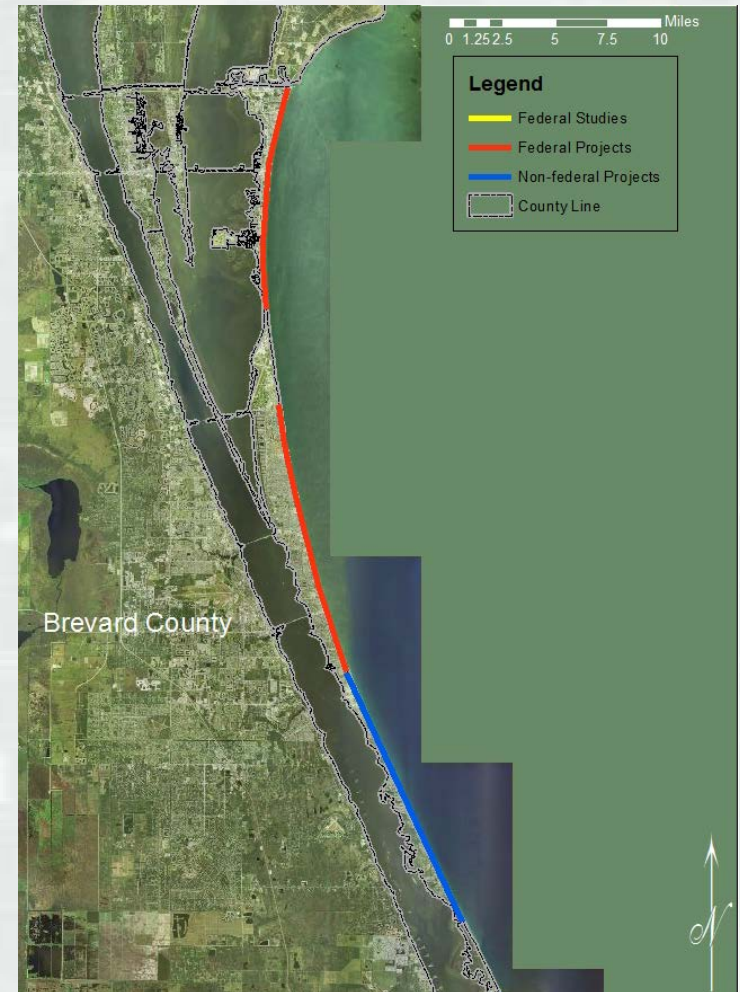


# Brevard County



BUILDING STRONG

- Federal Projects
  - ▶ Brevard County – North Reach, R-1 to R-53
  - ▶ Brevard County – Mid Reach, R-73.5 to R-118
  - ▶ Brevard County – South Reach, R-118 to R-139
- Non-federal Projects
  - ▶ South Beaches Dune Project



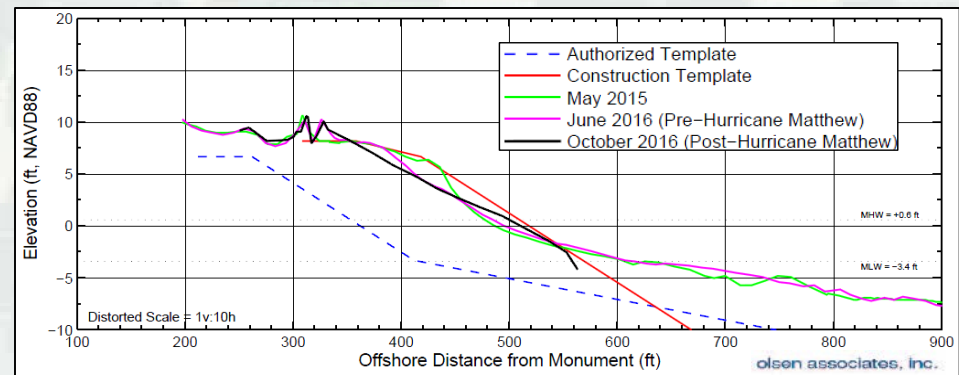
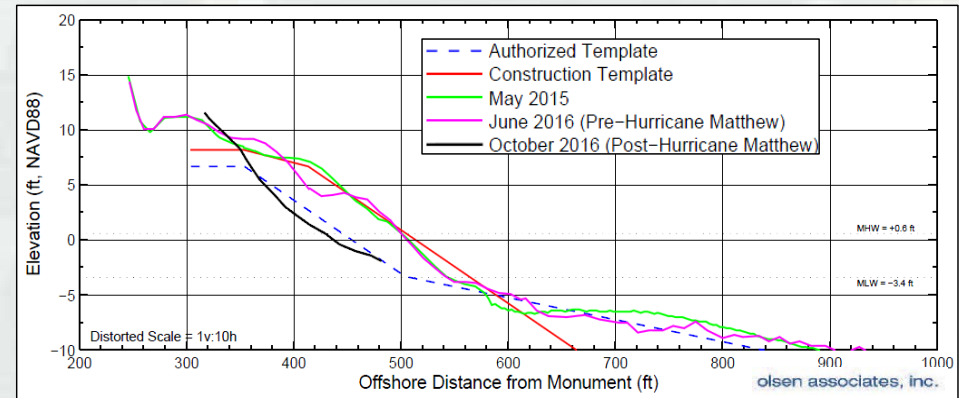


# Brevard County



**BUILDING STRONG**

Project	Pre-to-post storm Volume (CY)	Post-storm to design template (FCCE volume) (CY)	Post-storm to construction template (CY)
North Reach (R-1 to R-53)	2,144	1,705	316,291
South Reach (R-119 to R-139)	277,209	39,893	383,605



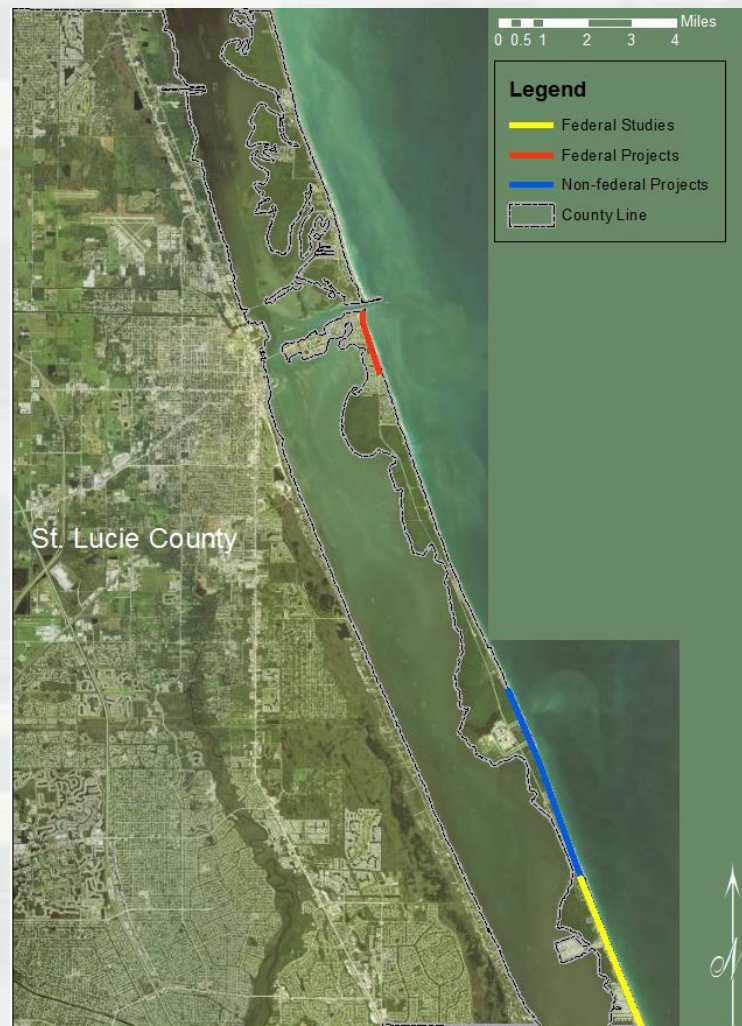


# St. Lucie County



BUILDING STRONG

- Federal Projects
  - ▶ Ft. Pierce SPP (R-34 to R-41)
  - ▶ St. Lucie County Feasibility Study (R-98.5 to R-1)
    - 20 ft berm
    - 422 kcy initial construction
    - 390 kcy periodic nourishment
      - ▷ 18 year intervals
    - Chief's Report expected October 2017
    - WRDA/WIIN 2018 Authorization???
- Non-federal Projects
  - ▶ Southern St. Lucie South Beaches (R-77 to R-114)





# Ft. Pierce SPP



**BUILDING STRONG**



Project	R-monuments	Method of Computation	Pre- to Post-Storm Overall (CY)	Post-Storm to Design Template (FCCE volume) (CY)	Post-Storm to Construction Template (CY)
Fort Pierce	R-34 to R-41	Triangle	-42,794	77,523	412,059
		End Area	-45,773	81,284	420,787
		Average	-44,284	79,404	416,423
		Net Loss (between pre- and post-storm)		5,738	33,042





U.S. ARMY

# Broward County Segment III

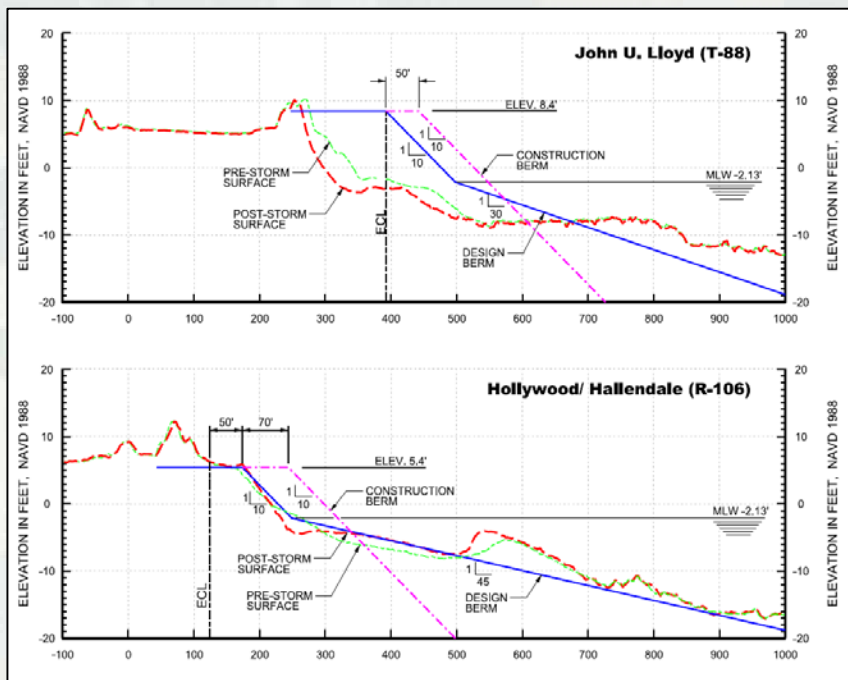


BUILDING STRONG



Project Segment	R-monuments	Pre- to Post-Storm Overall Loss (CY)	Pre- to Post-Storm Loss within Design Template (CY)	Post-Storm to Design Template (CY)	Post-Storm to Construction Template (CY)
John U Lloyd	R86 - R94	36,557	54,507	380,782	489,167
Hollywood/Hallendale	R101 - R128	11,149	84,064	593,515	956,696
<b>Total</b>	<b>R86 - R94; R101 - R128</b>	<b>47,706</b>	<b>138,571</b>	<b>974,297</b>	<b>1,445,863</b>

Note: negative (-) values for volume loss indicates volume gain.





# Miami-Dade County



BUILDING STRONG

- Federal Projects
- Miami-Dade County SPP
  - ▶ Sunny Isles (R-7 to R-12)
  - ▶ Bal Harbor (R-27 to R-31)
  - ▶ Surfside (R-31 to R-38)
  - ▶ Miami Beach (R-38 to R-74.4)
    - 65<sup>th</sup> Street (R-43 to R-44+500')
    - 55<sup>th</sup> Street (R-48+700' to R-50+700')
      - ▷ On-going truck haul renourishment (~225kcy)
    - 29<sup>th</sup> Street (R-60 to R-61)
- Non-federal Projects
  - ▶ Golden Beach (R-1 to R-7)







# Dade County (Federal)



**BUILDING STRONG**



Project	Pre-to-post storm Volume (CY)	Post-storm to design template (FCCE volume) (CY)	Post-storm to construction template (CY)
Dade Co BEC - Sunny Isles (2.5 mi, R7 to R19.5)	26400 <sup>1</sup>	3960 <sup>2</sup>	450000 <sup>4</sup>
Dade Co BEC - Main Segment (10.5 mi, R27 to R74)	100880 <sup>1</sup>	0 <sup>3</sup>	1400000 <sup>4</sup>





# FCCE Status



BUILDING STRONG

- Project Information Reports (PIR's) have been drafted and are under review
- Guidance on designation of FCCE (100% Federal) erosion volumes is still being coordinated with our headquarters
- PIR erosion volumes are based on the figures shown here, but subject to change
- Potential for a supplemental funding bill and usace 'work plan' funding for cost-shared renourishments
- Jacksonville District continues to work FCCE guidance and we will release any FCCE/supplemental/work plan information as soon as we can



# Lessons Learned



BUILDING STRONG

## What continues to work

- ▶ Early engagement with local county/city beach points of contact—starting during pre-storm approach
- ▶ Immediate post-storm deployment of Preliminary Damage Assessment teams
- ▶ Joint USACE, FEMA and FDEP assessments
- ▶ Experienced USACE Project Information Report (PIR) teams
  - Common 'Extraordinary' storm analysis for all South Atlantic USACE districts
  - Dedicated beach nourishment design engineer support—rapid volume estimates pending receipt of data
  - USACE Planning Technical Leads with PIR guidance and writing experience
- ▶ Engagement of FSBPA at State and Federal level



# Lessons Learned



BUILDING STRONG

## Challenges

- ▶ Pre- and post-storm surveys
  - Wading depth ok
  - Pre-storm at beginning of hurricane season
  - Collect ASAP post-storm
- ▶ Need letters requesting FCCE support from non-Federal sponsors to Jacksonville District as soon as possible after storm
- ▶ Continued need for refinement of USACE guidance on FCCE—Jacksonville is and will continue to be engaged
  - Storm significant based on erosion potential vs. Saffir Simpson category
  - Establish clear guidance on storm damage and restoration volume computations



# Takeaways



BUILDING STRONG

- Hurricane Matthew produced combined storm surge and wave impacts to the Atlantic coast of Florida that were catastrophic to the first line of defense
- Beaches in central and north Florida that lacked robust berm and dune systems were overwhelmed by the combined tide/surge/waves and those communities suffered significant damage from erosion, flooding or both
- Coastal armor sustained significant damage and in many cases did not protect as intended; many failed bulkheads/seawalls and revetments with structure damage behind them
- Healthy beach systems sustained significant damage to the beach and dune system but the communities that they protected sustained little or no damage
- The contrasts in community resilience in locations with healthy dunes and beaches as a first line of defense and those with eroded beach systems cannot be ignored
- 'Resilience' is a current buzzword, but there is a significant opportunity to demonstrate the value of our engineered beaches on community resilience using the Hurricane Matthew; it impacted a large area with highly variable coastal defenses and coastal development and there are large contrasts in coastal damage in adjacent communities



# Thank You



**BUILDING STRONG**



**Jason Engle, P.E.**

**Kevin Hodgens, P.E.**

**Jennifer Coor, Ph.D., P.G.**

USACE – Jacksonville District

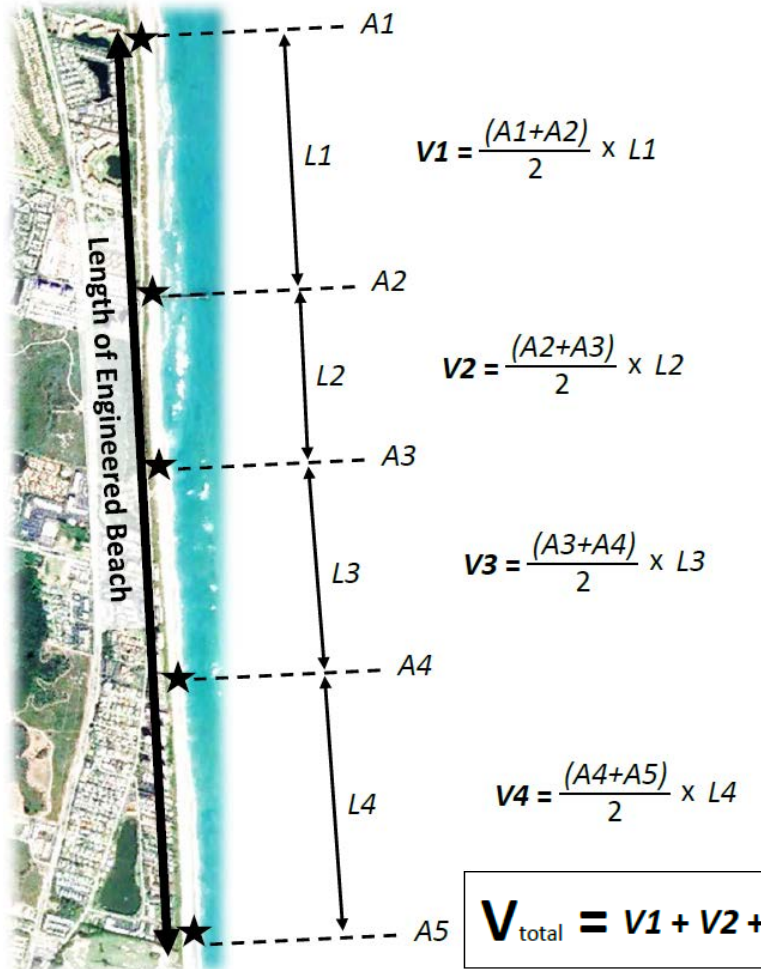


U.S. ARMY

# FEMA Volume Loss



BUILDING STRONG



★ = Inspection Point

