

Engineering and Regulatory Aspects of Sebastian Inlet Management

32nd Annual National Conference on Beach Preservation
Technology

February 6, 2019



Coastal, Environmental, Marine & Water Resources
Engineering

Inlet Management Goals

- ▶ Provide navigation access
- ▶ Mitigate inlet downdrift impacts (FS 161.041(1)(b))
- ▶ Contribute to the socio-economic and environmental conditions in the region

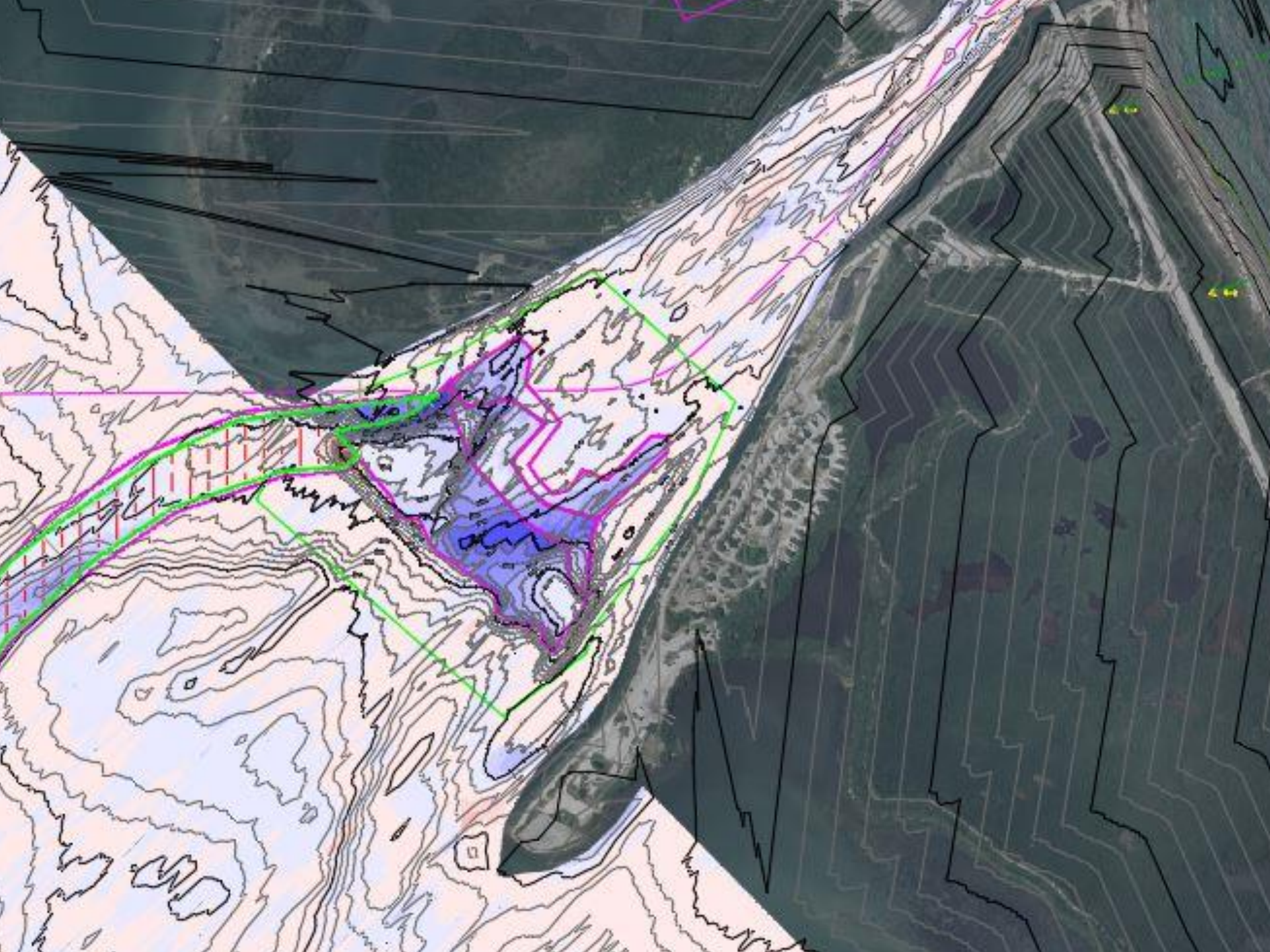


Provide navigation access

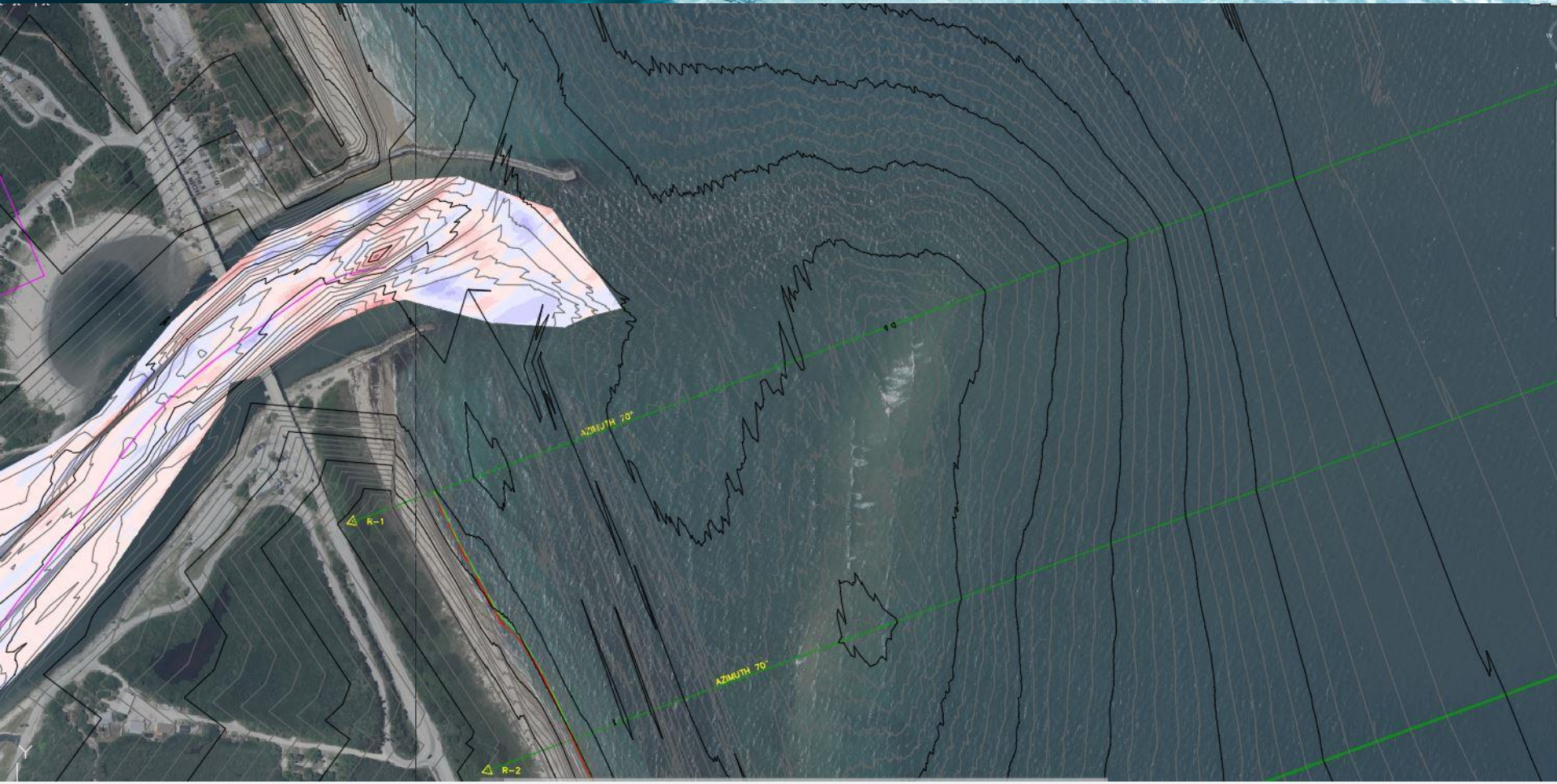




From 'Tidal Inlets and Littoral Drift'
Per Bruun, 1966



Ebb Shoal



Dredged Material Management Area (DMMA)



DMMA Screening



Sand Stockpile – Mount Sebastian



Beach Sand Placement

Year	Volume (c.y.)	Source
2011	119,851	Inlet and Trap
2012	21,400	DMMA
2013	34,000	Truck Haul (Upland Source)
2014	111,242	Inlet and Trap
2015	55,818	Truck Haul & DMMA
2017	30,242	DMMA
2019	150,000	Under Constructon



Looking Towards the Future

- ▶ Continuation of establish bypassing plan
- ▶ Revisit Inlet Management Plan based on ongoing studies



Engineering and Regulatory Aspects of Sebastian Inlet Management

32nd Annual National Conference on Beach Preservation
Technology

February 6, 2019



Coastal, Environmental, Marine & Water Resources
Engineering

