



# Federal Funding for Beaches: Recent Decisions and Implications

**Trisston Brown (USACE) &  
Bob Glassen (FEMA)**  
February 3, 2023



**US Army Corps  
of Engineers** ®



**FEMA**



# Overview

---

- Federal CSRM Project Framework
- Water Resources Development Act (WRDA)
- New Language - WRDA of 2022
- How FEMA Categorize Beaches
- When FEMA-eligible Beach becomes a Corps Beach



US Army Corps  
of Engineers ®

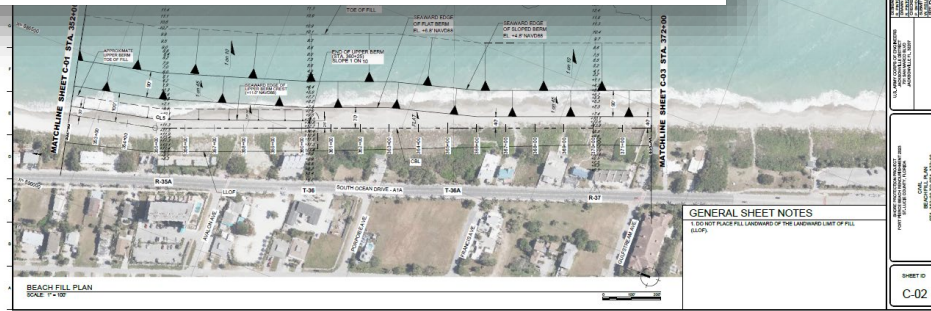
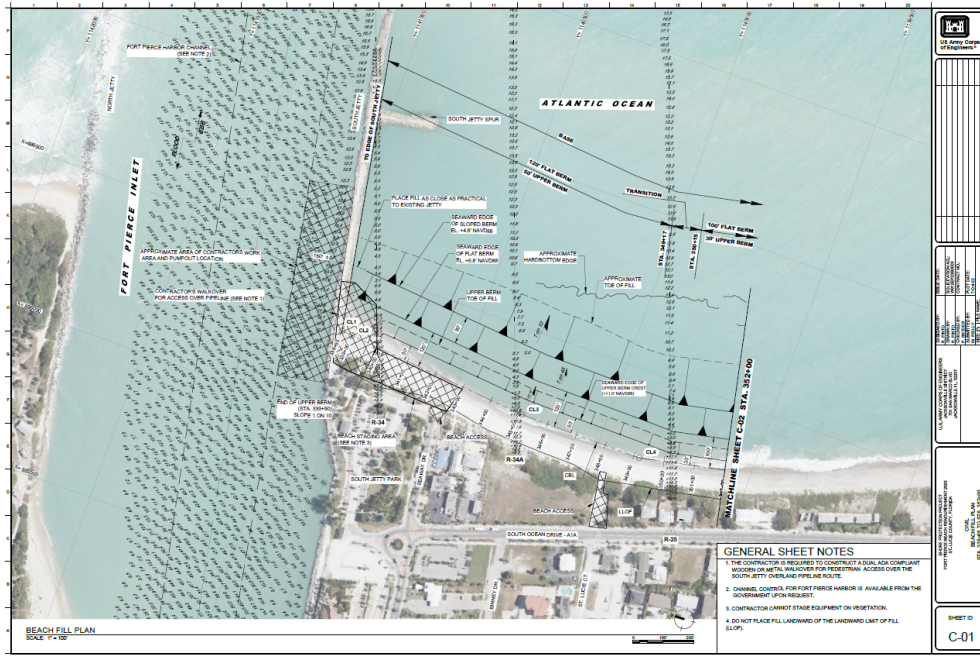


FEMA

Federal Emergency Management Agency &  
US Army Corps of Engineers

# Federal CSRM Project Framework

Fort Pierce Beach, FL



- Cost shared study
- Cost shared Initial Construction
- Cost shared renourishments
- 50-years Federal Participation
- Eligible for Flood Control & Coastal Emergency (FCCE) funding until deauthorized



US Army Corps of Engineers



FEMA

# Water Resources Development Act (WRDA)



## WATER RESOURCES DEVELOPMENT ACT



What is the Water Resources Development Act?

<https://www.usace.army.mil/Missions/Civil-Works/Water-Resources-Development-Act/>



US Army Corps  
of Engineers®



FEMA

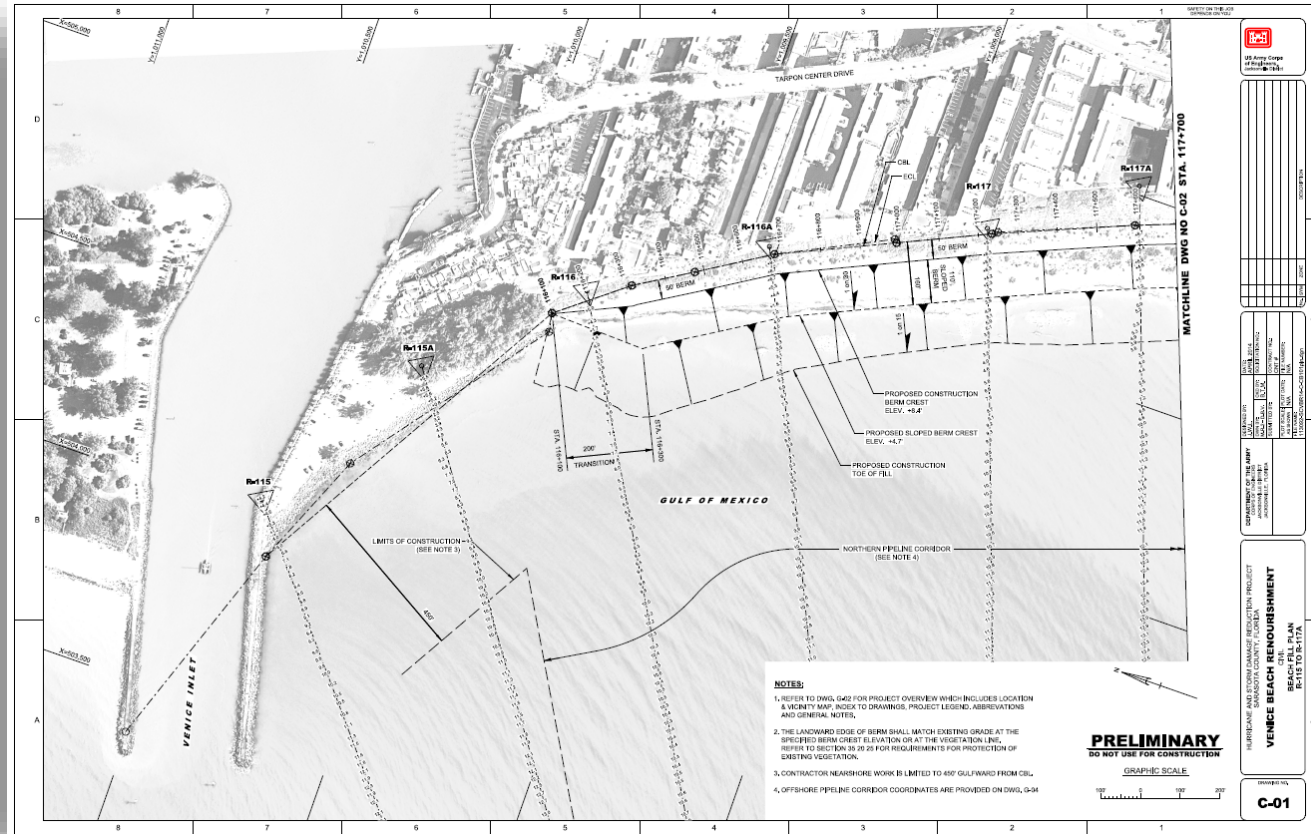
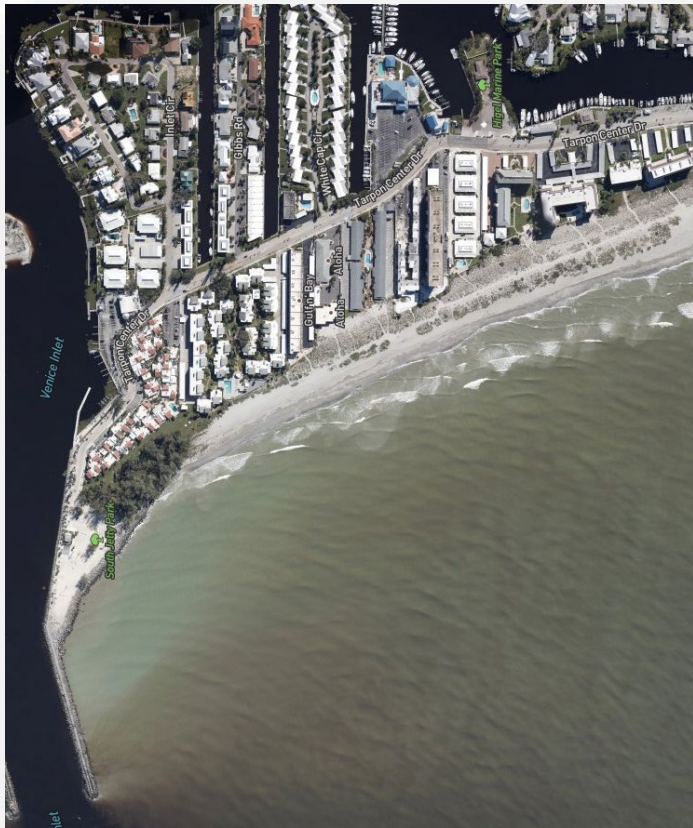
Federal Emergency Management Agency &  
US Army Corps of Engineers



# WRDA of 2022

## Section 8102 - Emergency Response to Natural Disasters

Venice Beach, FL



WRDA of 2022 allows for rehabilitation of CSRMs Projects to the authorized design level of protection



US Army Corps of Engineers



FEMA

Federal Emergency Management Agency & US Army Corps of Engineers

# Does FEMA Build Beaches?



US Army Corps  
of Engineers®



FEMA

Federal Emergency Management Agency &  
US Army Corps of Engineers



# Does FEMA Build Beaches?

NO! FEMA DOES NOT BUILD BEACHES!



US Army Corps  
of Engineers®



FEMA

Federal Emergency Management Agency &  
US Army Corps of Engineers

# CAT B Emergency Berms on Beaches

BRG: 56°NE (T) POS: 34.491756°N, 77.420219°W ALT: 4ft



N Topsail Beach - Cat B  
12 Dec 2018, 11:31:11



US Army Corps  
of Engineers ®



FEMA

Federal Emergency Management Agency &  
US Army Corps of Engineers



# CAT B Emergency Berms on Beaches

BRG: 114°SE (T) POS: 29°56.919'N, 85°25.423'W ALT: 8ft



US Army Corps  
of Engineers®



FEMA

Mexico Beach  
26 Jul 2019, 13:00:17

Federal Emergency Management Agency &  
US Army Corps of Engineers

# CAT B Emergency Berms on Beaches

BRG: 114°SE (T) POS: 29.942045°N, 85.410599°W ALT: 5ft



US Army Corps  
of Engineers®



FEMA

Federal Emergency Management Agency &  
US Army Corps of Engineers

# The CAT G Engineered Beach



US Army Corps  
of Engineers ®



FEMA

Federal Emergency Management Agency &  
US Army Corps of Engineers

# CAT G "Engineered Beaches"

---

- Is the Beach Eligible for Public Assistance?
  - Is it a “...a federally constructed shoreline under the specific authority of USACE (i.e., not a specifically authorized and constructed Coastal Storm Risk Management Project)”?

(PAPPG p. 180)



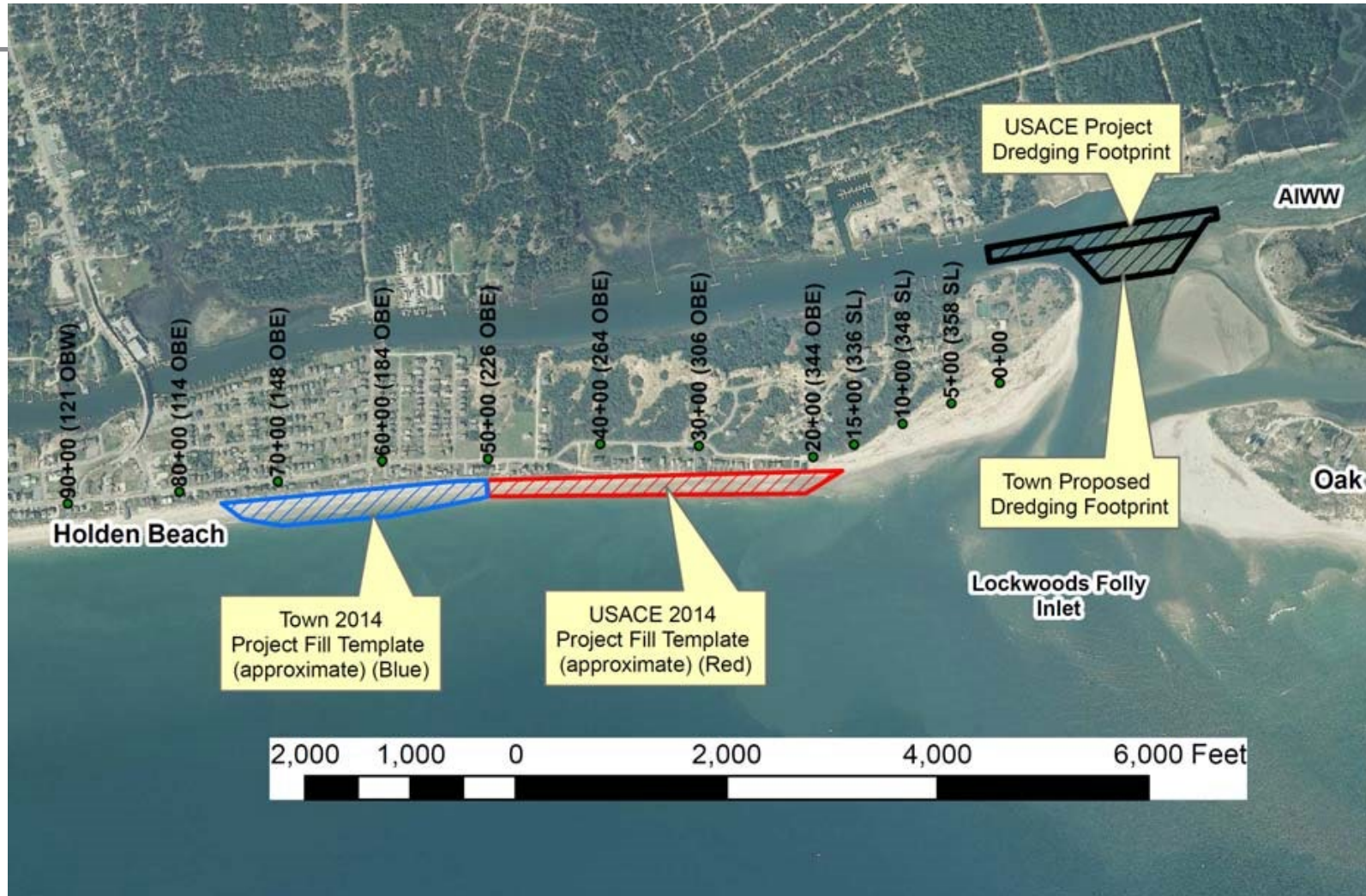
US Army Corps  
of Engineers ®



FEMA

Federal Emergency Management Agency &  
US Army Corps of Engineers

# Corps Beaches

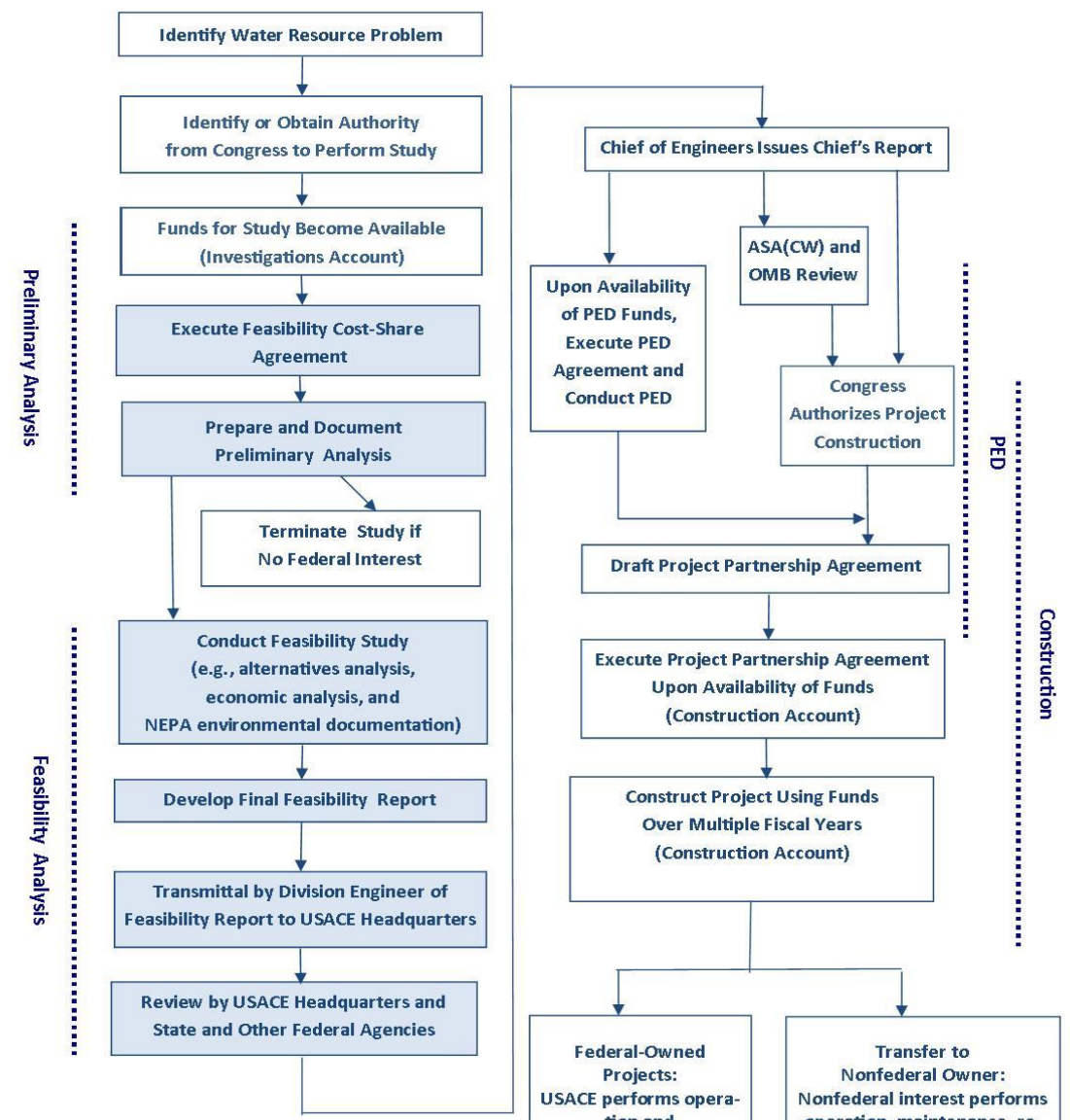


US Army Corps of Engineers®



FEMA

Federal Emergency Management Agency & US Army Corps of Engineers



**Legend and Acronyms:**  
 USACE — U.S. Army Corps of Engineers  
 ASA(CW) — Assistant Secretary of the Army (Civil Works)  
 NEPA — National Environmental Policy Act (42 U.S.C. §4321 et seq.)  
 OMB — Office of Management and Budget  
 PED—Preconstruction Engineering and Design

Study items that together are generally to be completed within 3 years



**US Army Corps of Engineers**®



**FEMA**

# Questions?

---



US Army Corps  
of Engineers®



FEMA

Federal Emergency Management Agency &  
US Army Corps of Engineers