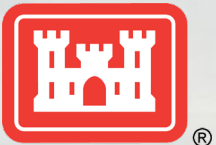


FEDERAL BEACHES 101

A Primer on Coastal Storm Risk Management Projects

1. History, Feasibility, and Authorization
2. Economic Considerations
3. Design and Implementation
4. Sediments
5. Environmental Considerations

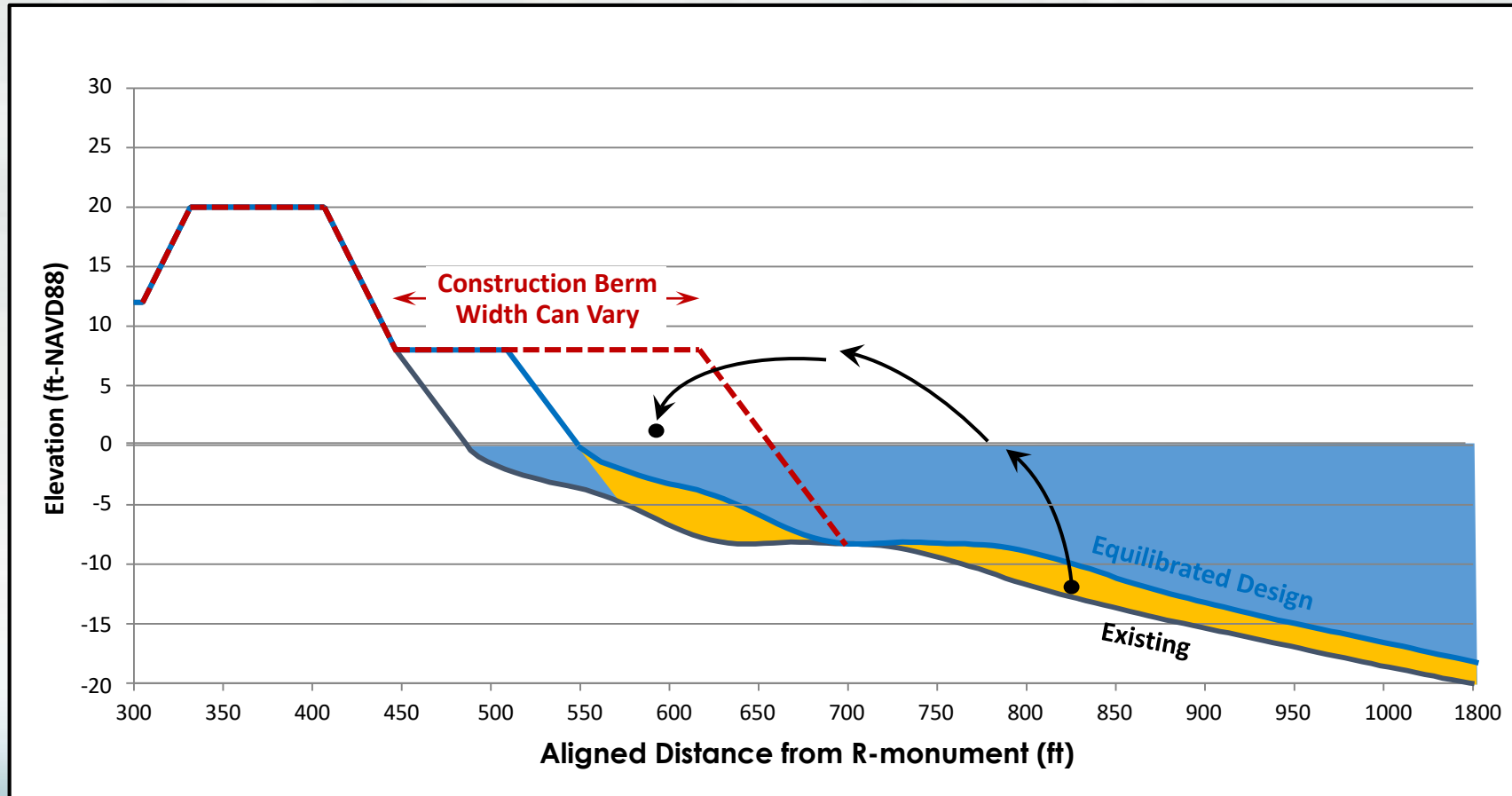
U.S. Army Corps of Engineers
Jacksonville District
September 2020





DESIGN AND IMPLEMENTATION

INITIAL DESIGN



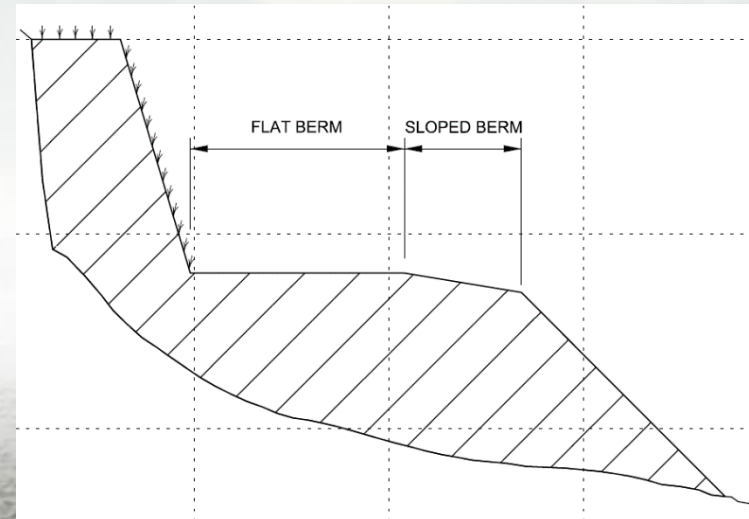
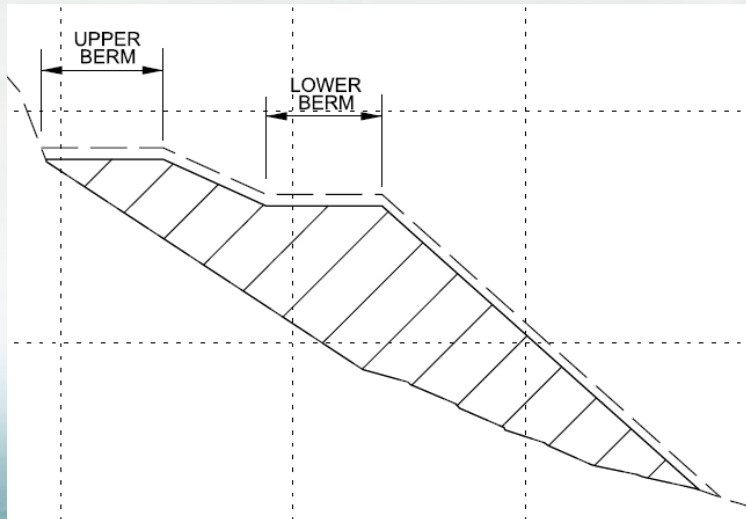
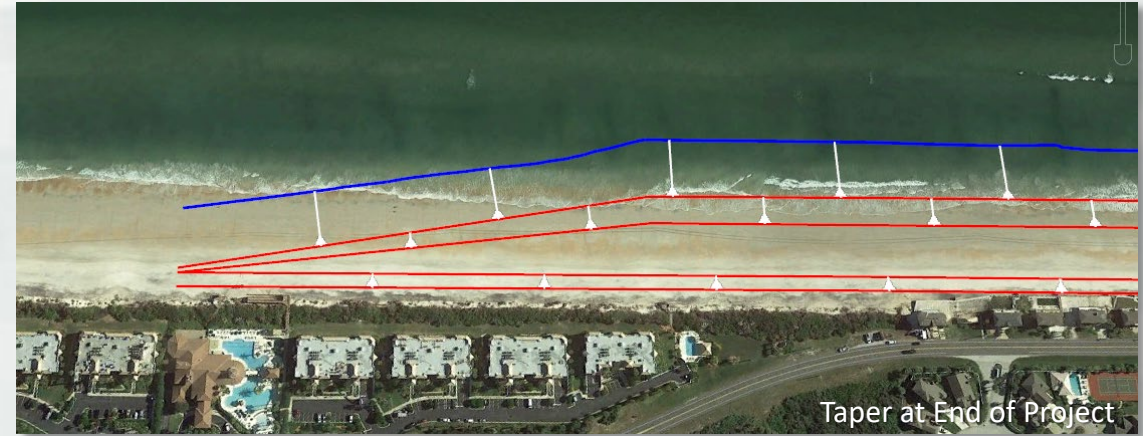


DESIGN AND IMPLEMENTATION

DESIGN TEMPLATE CONSIDERATIONS



- Template Slopes can also be Adjusted as Necessary
- Mildly Sloped Berms
- Beach Fill Transitions/Tapers





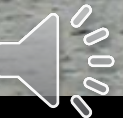
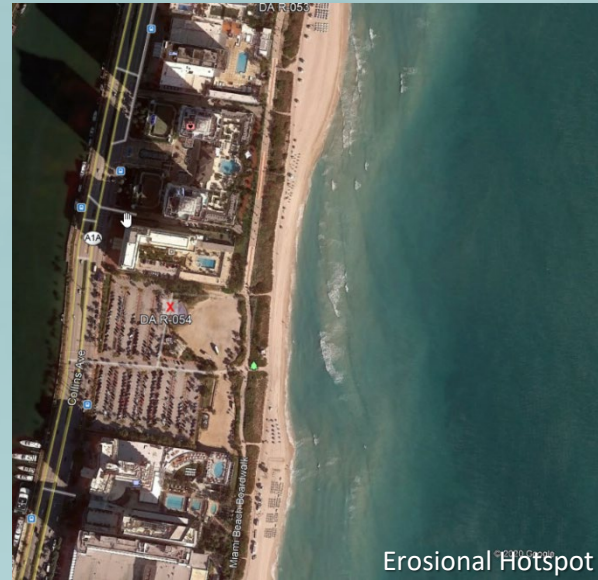
DESIGN AND IMPLEMENTATION

OTHER DESIGN CONSIDERATIONS



- Erosional “Hotspot” Locations
- Other Project Impacts?
 - Federal Navigation Dredging Projects
 - Non-Federal Projects
- Non-Federal Project Features

Project-Specific Design Considerations





DESIGN AND IMPLEMENTATION

OTHER DESIGN CONSIDERATIONS



- FDEP JCP Permit
- BOEM Agreement
- Establish the ECL
- Perpetual Easements and Staging/Access
- Hardbottom





DESIGN AND IMPLEMENTATION BETWEEN NOURISHMENTS



- Operate, Maintain, Repair, Replace and Rehabilitate (OMRR&R)
- Physical and Biological Monitoring
- Post Construction Borrow Area Surveys
- PL84-99 Eligible After Initial Construction



USACE Survey Vessel Florida

CECW-EH-D Engineer Regulation 1110-2-2902	Department of the Army U.S. Army Corps of Engineers Washington, DC 20314-1000	ER 1110-2-2902 30 June 1989
	Engineering and Design PRESCRIBED PROCEDURES FOR THE MAINTENANCE AND OPERATION OF SHORE PROTECTION WORKS	
	Distribution Restriction Statement Approved for public release; distribution is unlimited.	





DESIGN AND IMPLEMENTATION

SCHEDULED PERIODIC RENOURISHMENTS



- Periodic Renourishment Triggers
- Volume Analysis
- Adapt Design as Necessary
- Minimize Renourishment Events
- Funding Limitations



Miami-Dade County, FL (Surfside)

