



2022 Pre-Session Overview

By Pepper Uchino

As November turned to December last year, the last pre-Session committee week of the 2022 Regular Session wrapped up. It seems hard to believe, but this will be the 15th year I have been part of the legislative process. Even so, this one stood out, and not just to me. Even long-time lobbyists and members experienced it the same way.

So, why was this one so different? First, it's a reapportionment year, so a lot of time and energy on behalf of staff and the political operatives has been focused on the data-driven process of drawing maps that are politically advantageous but still comply with the Florida constitution, which was amended several years ago to prevent drawing maps for partisan purposes. The second is we are coming into a congressional midterm and state gubernatorial election and campaign fundraising is a major priority. Lastly, and probably most impactful is that the Special Session on COVID mandates ate up all of Committee Week 5, and there seemed to be significant fatigue from the Special Session during Week 6. Historically, committee weeks 5 and 6 are when priority bills start to move, but this was not the case this year.

[Continued on next page](#)

A Message from FSBPA's New Chair

By Charlie Hunsicker, Manatee County

As your incoming Chair, I'd like to take a moment to reflect on the year past and the year ahead.

In the last 24 months as COVID moved so many professions and office workers to isolated workspaces and away from our office work families, I'm sure many of us began to reflect on the importance of personal space and sense of place, whether that occurred in a home environment, around a circle of close friends and neighbors, or cities and counties coming

[Continued on page 3](#)



Inside this Edition

Meet FSBPA's Newest Board Member

... page 4

What's on the Agenda in 2022

... page 5

2022 Tech Conference February 2-4

Embassy Suites-St. Augustine

- ◆ Program
- ◆ [Early conference registration and hotel rates ends January 7](#)
- ◆ [Thank you to Our Sponsors](#)

... page 6

St. Lucie County's Erosion District

Fort Pierce Inlet Sand Trap (Phase 1) Project

by Joshua Revord, St. Lucie County
and Ken Craig, Taylor Engineering

... page 8



US Army Corps
of Engineers

Construction Complete on Nearly 20 Miles of Space Coast Shoreline

...page 10

Florida Oceans Day February 1, 2022

...page 12

Speaking of COVID, while no additional protocols have been released by either chamber yet, given the explosion of cases in Florida, it will not surprise me if both chambers reinstitute some additional measures like last year. If so, those will limit in-person advocacy opportunities for a second year. It seems absurd thinking back to the abandoned halls during the final week of the 2020 Regular Session that we'd still be in the thick of the pandemic at the start of the 2022 Session, but here we are. Session convenes on January 11 and runs through March 11.

[The 2022/23 Appropriations Process](#)

Coming off a historic year of funding, Florida's beaches are in great shape as evidenced by the less than usual amount of local government funding requests – approximately \$58.65M. FSBPA's agenda for the 2022 Legislative Session is, again, straightforward. As of now, the strategy for implementation may either be similar to 2021, during which a lot of work was done virtually or by phone/email because of COVID, or, if the chambers decide not to take protective measures, it will be a more traditional "in-person" advocacy campaign. There is just too much uncertainty with the Omicron variant to be able to predict the correct path forward, so we will stay nimble and adaptable. Fortunately for the statewide beach program, like last year, documentary stamp tax revenues are growing as the real estate market is showing no signs of cooling. Unlike in years past, our initial starting point is to fund the entire list – \$50M in the base budget *and* the remainder from either unallocated 2021 funds reappropriated in 2022 or from non-recurring LATF. If you recall from last year, the statewide program received \$50M recurring LATF, \$50M non-recurring LATF and \$50M ARP funds, which remain largely unspent.

[FY 2022/23 Budget Updates](#)

During the second committee week, Amy Baker, the state's lead economist, gave an update on the state's long-range economic outlook. The news was almost completely positive for a change, with the only caveats being the unknowns and inflationary pressures. The bottom line is the state is in great fiscal shape moving into the next budget cycle. Even during the December update, the news was still positive but with a significant more uncertainty due to the Omicron variant. Updated numbers have not been presented since Committee Week 2 but will be at the beginning of Session, which will give the members the updated financial impacts of Omicron and inflation on the economy. However, even during the pandemic, Florida's tourism economy continued to rebound to pre-pandemic levels for domestic travel. The lone negative continues to be COVID's drag on international tourism, which is expected until the pandemic subsides.

[Governor's Budget](#)

On December 9, 2021, Governor DeSantis released his proposed 2022/23 budget. The \$99.7B budget has several bright spots related to beaches and coasts. The first is the continuation of \$50M in programmatic funding for the statewide beach program. In addition, the governor proposes an additional \$550M to continue resilience efforts around the state. This builds on the program being established by the DEP, which is on a major hiring blitz to staff the new program. This year's budget also calls for \$30.8M to combat harmful algal blooms and red tide and another \$8M to protect coral reefs. There are many more positives in the budget, so please contact me if you want to discuss any of them in more detail.

[Substantive Legislation](#)

FSBPA will continually update our 2022 Tracking Matrix. Like last year, there are two predominant bill subjects impacting our 2022 governmental agenda: those bills seeking direct statutory allocations of limited recurring LATF dollars, and new climate change/coastal resilience initiatives. Of course, we are always looking for and tracking any legislation that will negatively impact any aspect of the statewide program, including all legislation opening Chapter 161, F.S. If at any time there are substantive bills or issues you would like to discuss in depth, please contact me.

We look forward to again serving the needs of Florida's beaches this Session.

[Back to Main Page](#)

A MESSAGE FROM FSBPA'S NEW CHAIR (continued from page 1)

together to support each other through health challenges and economic downturn. I believe COVID has made us realize a bigger picture about who we are as a profession and community as the world pandemic seemed to close in around us. Zoom calls and Teams meetings notwithstanding, the value of our outdoor recreational pursuits and quality recreational experiences became important to all Floridians and visitors if our outdoor attendance figures and tourist tax proceeds in 2021 gave us any indication about the importance of access to over 825 miles of Florida's sandy beaches.

This sense of place extends beyond focusing solely on our beaches and our professional responsibilities for their protection and management. We are challenged to look beyond the shoreline to all the other important components supporting natural systems, defining our sense of place not only for residents and professionals working for coastal communities but as Floridians working to support the natural resources of our state for which beaches play an important part. That is why I believe our FSBPA movement to recognize the value of partnerships with individuals and organizations focused on statewide sustainable environmental practices and resiliency are important. These partnerships across the natural resource spectrum beyond our beaches will begin to be reflected in our conference offerings and practices as our political institutions move in a long-awaited direction to recognize the interrelationships that our land, water, natural resource systems, and healthy beaches play to sustain our quality of life and our sense of place as Floridians.

It is exciting to be part of a professional organization that stands at the threshold of this partnership role, believing we can do so without losing the focus of decades of professionalism and support for the science of beach and inlet management around our entire coastline of Florida. As incoming Chair, I also want to express my immeasurable appreciation for our capable FSBPA staff, who continue to guide our organization under the highest fiduciary standards and personal commitment to keep us moving forward as one of the most successful associations in the state.

Next Page

2022 FSBPA Board of Directors Executive Committee

Charlie Hunsicker
Manatee County

Emily Lewis
Charlotte County

Steve Boutelle
Lee County

Don Donaldson
Martin County

Directors

John Bishop
Pinellas County

Jennifer Bistyga
City of Boca Raton

Marina Blanco-Pape
Miami-Dade County

Damon Douglas
St. Johns County

Tom Harmer
Town of Longboat Key

Joshua Revord
St. Lucie County

Dan Rowe
Bay County

Andy Studt
Palm Beach County

Janet Zimmerman
Florida Inland Navigation District

Meet FSBPA's Newest Board Member

John Bishop, Ph.D.

John Bishop is the Coastal Management Coordinator for Pinellas County where he has been employed for 8 years. Dr. Bishop oversees the County's Coastal Management Program including local stabilization projects and the County's Federal shore protection projects. Dr. Bishop has a Bachelor's of Science in



Geological Sciences from the State University of New York at Buffalo. After moving to Florida, Dr. Bishop attended the Florida Institute of Technology where he received his Master's in Geological Oceanography and Doctorate in Oceanography.

Outside of work, Dr. Bishop enjoys woodworking and spending time with his wife and two sons.

"Maintaining Florida's beaches for future generations to enjoy is important to me. I look forward to serving on FSBPA's Board of Directors."

[Back to Main Page](#)

On the Agenda in 2022

The 35th National Conference on Beach Preservation Technology kicks off in just one month at the St. Augustine Embassy Suites. The Planning Committee arranged an outstanding lineup of speakers in this year's program, and we hope you make plans to attend. Please take time to review the [full agenda](#) and reserve your seat today! The conference runs from February 2 – 4, in a hybrid format to accommodate anyone who cannot travel. [Early registration](#) and the group rate at the [Embassy Suites](#) ends on **January 7, 2022**.

Conference Objectives

- Presents the latest in beach preservation technology and coastal research put into real-world practice
- Provides a forum for academic, scientific and coastal design professionals to present timely information to peers and government managers who make decisions on coastal projects and policies
- Encourages networking and professional development



35th National Conference on Beach Preservation Technology

February 2-4, 2022 · St. Augustine Embassy Suites

What's New in 2022?

Save the Date: October 5 - 7, 2022

FSBPA and Resiliency Florida teamed up last September to hold the 1st Florida Resilience Conference. Based on the positive feedback from attendees and guidance from the Board of Directors, we will be hosting the 2nd Annual Florida Resilience Conference in October. FSBPA and Resiliency Florida are working together to organize a comprehensive and expanded agenda with multiple tracks of interest for our members. Our 65th Annual Meeting will be a central part of this event. After all, beach preservation and resilience go hand in hand. The Florida Resilience Conference will offer you a new and exciting opportunity to learn about statewide resilience initiatives, policies and programs, alongside those for beaches. The event will be held at the Hyatt Regency Coconut Point Resort in Bonita Springs. More information coming soon.

[Back to Main Page](#)

Thank you to our Conference Sponsors

Host Sponsor



Tote Bags



Name Badge Holders



Note Books



Student Scholarships



Cork Coasters



Conference Pens



Hand Sanitizer



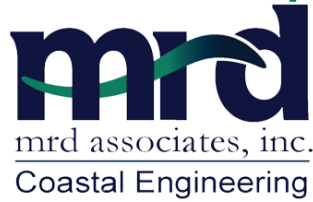
Mobile App



Welcome Reception



Session Sponsors



Gold Luncheon Sponsor



Silver Luncheon Sponsors



Morning Coffee Breaks



moffatt & nichol

Friday Breakfast Break



Friends of FSBPA



Friends of FSBPA with Benefits



HUMISTON & MOORE ENGINEERS

COASTAL ENGINEERING AND PERMITTING "Restoring Beaches as Natural Coastal Systems"



Back to Main Page

St. Lucie County's Erosion District Fort Pierce Inlet Sand Trap (Phase 1) Project

Joshua Revord, St. Lucie County and Ken Craig, Taylor Engineering

The Florida Department of Environmental Protection (FDEP) adopted the Fort Pierce Inlet Management Plan (IMP) in 1997 (CPE,1997). The IMP identified specific beach sand placement of 130,000 cubic yards per year on the downdrift beach (Fort Pierce Beach) to mitigate for the impacts of Fort Pierce Inlet (Figure 1). To address this deficit, St. Lucie County (with the help of Taylor Engineering) began a series of studies to determine the best means of implementing the recommended sand bypassing objectives identified in the IMP. This design effort spanned numerous years during which USACE, the State of Florida, and St. Lucie County addressed annual sand deficits primarily through placing offshore sands from Capron Shoal south of the Inlet as part of the federal Fort Pierce Shore Protection Project.



Figure 1: Fort Pierce Inlet, Fort Pierce, Florida

Initially, jetty sand tightening and a mobile sand bypassing plant were the preferred elements pursued to help address future sand bypassing objectives (Taylor, 2008-2009). Those efforts were eventually ruled out due to cost and the extensive biological impacts such plans/designs would have on adjacent nearshore hardbottom resources. A sediment impoundment basin (sand trap) within the Inlet was eventually identified as the most viable option when considering both financial and biological limitations, including feedback received during public workshops held in 2009, 2011, and 2014. Alternative sand trap sizes and locations were eventually vetted using wide-ranging design and modeling techniques. Through these iterations, the County/Taylor Engineering identified a preferred plan with a proposed "phased"

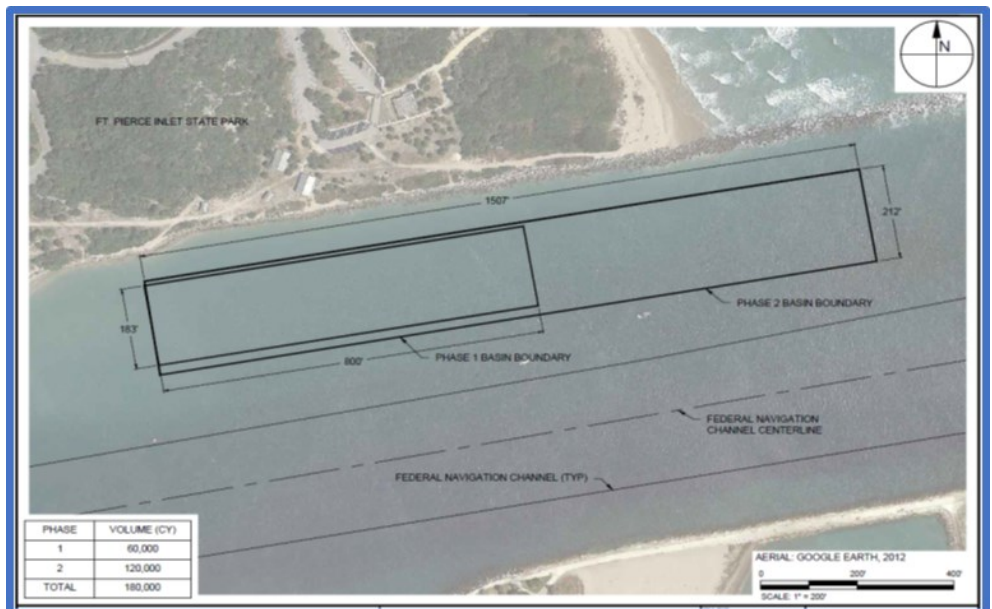


Figure 2: Fort Pierce Inlet Sand Trap (Phase I) Construction

approach to limit exposure to unintended consequence associated with implementing a new feature within the Inlet. A 60,000 cubic yard (Phase I) pilot project was identified as the preferred option (*Figure 2*). Of course, future documented success of the initial phase (Phase I) would/could lay the foundation for a Phase II expansion (180,000 cubic yard capacity basin). Permitting of the project was initiated in 2014 and FDEP Permit 0327791-001-JC and USACE permit SAJ-2014-02065 were issued in 2017 and 2019, respectively. A Sovereignty Submerged Lands Easement was executed over the Phase 1 basin template in 2020 and project funding was secured for the project through FDEP's Beach Management Funding Assistance Program and the Florida Inland Navigation District's (F.I.N.D.) Waterway Assistance Program (**THANK YOU TO BOTH PARTNERS!**)



Figure 3: Fort Pierce Inlet Sand Trap (Phase I) Construction

storm impacts associated with Hurricanes Harvey, Irma, and Maria. The Congressional appropriation was extraordinary, flooding the dredge market with an unprecedented number of new coastal contracts and limiting contractor availability. After multiple revisions, the project was successfully bid on the fourth attempt in late 2021 (glad that is over with :-)). Construction was awarded to Ahtna Marine and Construction Company, LLC. in August of 2021.

On November 8, 2021, construction commenced within the Fort Pierce Inlet Sand Trap (Phase I) template area (*Figure 3*). The in-situ material, because of its inferior beach quality (*Figure 4*), is being disposed of in the Fort Pierce Offshore Dredged Material Disposal Site (ODMDS) permitted for the project (located within federal waters). We anticipate that the project will be completed by March of 2022. Permit required physical and biological monitoring will commence after construction, and the County looks to track the morphology of the basin and surrounding segments of the Fort Pierce Inlet to determine the appropriate next-steps.

DESIGN PARAMETERS

<u>Dimensions:</u>	Approximately 800' X 200'
<u>Depth:</u>	-32.0' NAVD +/- 0.5' tolerance
<u>Side Slopes:</u>	1V:3H
<u>Capacity:</u>	60,000 – 65,000 cubic yards
<u>In-Situ Material:</u>	Cemented Limestone Gravel / Shell

Bidding of the project was complicated due to a variety of factors, and eventually led to the issuance of a contract after 3 failed attempts to solicit qualified contractors. The size and location of the Phase I project were of particular concern; too big for the small guys..., too small for the big guys..., not to mention 'working in the throat of the Fort Pierce Inlet' (which comes with its own issues). To complicate things even more, initial bidding of the project took place during the onset of Covid-19 (November 2019), just after the Bipartisan Act of 2018 was funded by Congress to address post-

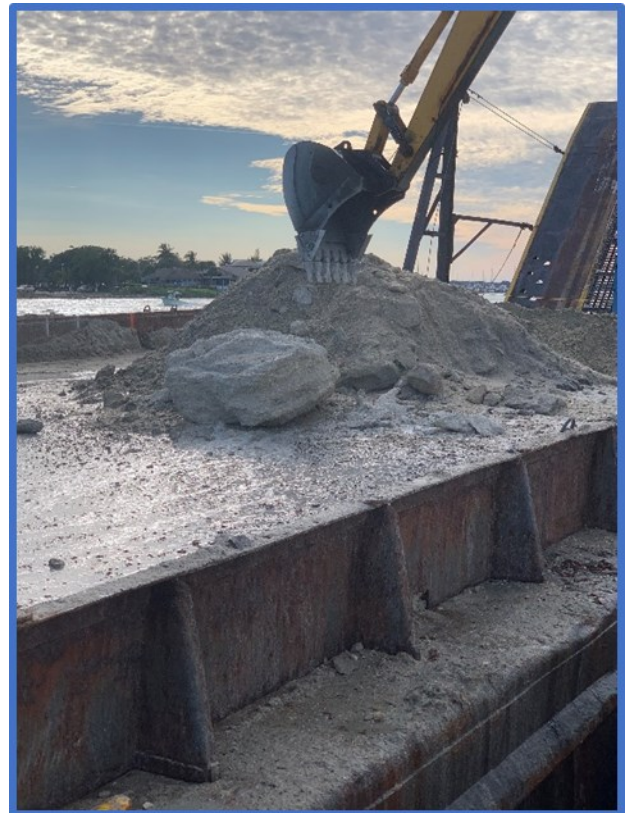


Figure 4: Excavated Material

Construction Complete on Nearly 20 Miles of Space Coast Shoreline

by Christopher S. Ren, PMP, CMIT



US Army Corps
of Engineers®

The U.S. Army Corps of Engineers Jacksonville District, in partnership with the Brevard County Department of Natural Resources Management, Patrick Space Force Base (PSFB), and coastal engineering consultation from Olsen Associates, recently completed construction of approximately 20 miles of Shore Protection and Coastal Storm Risk Management projects throughout Brevard County, FL. The segments of shoreline included the North Reach at Cocoa Beach, the Patrick Space Force Base segment, the Mid Reach stretching from north of Satellite Beach down to Indialantic, and the South Reach in Indialantic & Melbourne Beach, FL. All the sand used to rebuild these beaches was obtained, under an agreement with the Bureau of Ocean Energy Management (BOEM), from an offshore borrow area approximately 11 miles east of Canaveral Harbor.

The North Reach contract, worth roughly \$10 million, was awarded to Great Lakes Dredge & Dock based out of Oak Brook, IL. Work was only within the southern half of the North Reach and extended from just north of Minuteman Causeway in Cocoa Beach south to the northern boundary of Patrick Space Force Base (PSFB), placing almost 500,000 cubic yards (cy) of sand across this segment of Brevard County beaches.

The PSFB, Mid Reach, and South Reach combined contract, worth approximately \$50 million, was awarded to The Dutra Group based in San Rafael, CA. These segments extend about 16 miles from the northern boundary of PSFB all the way south to Spessard Holland Beach Park in Melbourne Beach, FL. The Dutra Group placed approximately 1.64 million cy of sand across all these segments onto Brevard County and PSFB beaches. The Mid Reach segment was unique in that its shoreline contains



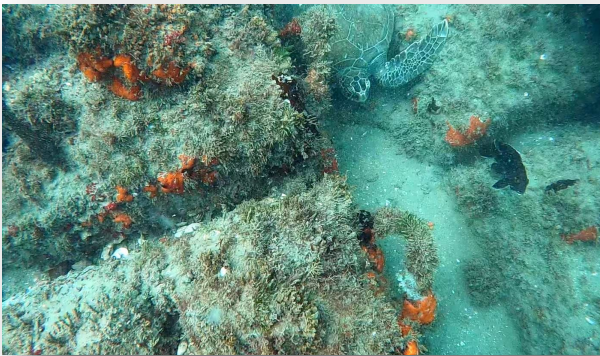
*Construction of the Patrick Space Force Base segment was completed by The Dutra Group in April of 2021.
Credit: U.S. Army Corps of Engineers*



*Vegetation, typically found on dunes, were planted on the newly constructed dunes along the Patrick Space Force Base segment.
Credit: U.S. Army Corps of Engineers*

patches of rocky hardbottom that required special care when placing sand around them. To mitigate for potential environmental impacts and provide additional habitat for sea turtles, the project included 4.8 acres of nearshore artificial reefs constructed by Shoreline Foundation, Inc. It should be noted that this construction event for the Mid Reach segment was the first nourishment of this critical area of beach in Brevard County, and that material placed on this segment and portions of PSFB was hydraulically stockpiled on the South Reach segment and hauled in by truck to minimize impact to environmentally sensitive hard bottom areas.

On average these beaches provide nesting habitat for approximately 6,500 sea turtles annually, including loggerhead, green, and leatherback turtles. Dunes on the PSFB segment were restored during the last renourishment with newly planted vegetation including sea oats, panic grass, dune sunflowers, railroad vine, seashore older, and sea grapes. This vegetation provides habitat and food for many species of wildlife, including small mammals, crustaceans, shorebirds, and migratory bird species.



*A sea turtle can be seen resting in the artificial reef that was constructed in the Mid-Reach segment of Brevard County shoreline.
Credit: Dr Karen Holloway Adkins PhD*



The job of protecting coastal communities and environments throughout Brevard County is not done. Every few years, or after major storm damage, the team is expected to come back together to renourish portions of these beaches and ensure they continue to provide benefits and protection. With the completion of these projects, this special part of Florida’s coastline is more resilient to impacts from future storms as these renourishments provide very real benefits to the nation, the regional and local economy, and the environment.



**FLORIDA'S ECONOMIC RECOVERY
AND THE BLUE ECONOMY**

Tuesday, February 1, 2022

Mote Legislative Reception

The Capitol, 22nd Floor, 5:30-7:00 pm

Sponsor: Mote Marine Laboratory & Aquarium

Wednesday, February 2, 2022

Celebrating the FIO Consortium, Exhibits & Reception

The Capitol, 22nd Floor, 5:00-7:00 pm

Sponsor: Florida Institute of Oceanography (FIO)



[Back to Main Page](#)

Shoreline

A monthly electronic publication of the Florida Shore & Beach Preservation Association.

Officers**Chair**

Charlie Hunsicker, Manatee County

Vice-Chair

Emily Lewis, Charlotte County

Secretary-Treasurer

Steve Boutelle, Lee County

Past-Chair

Don Donaldson, Martin County

Directors

John Bishop, Pinellas County
 Jennifer Bistyga, City of Boca Raton
 Marina Blanco-Pape, Miami-Dade County
 Damon Douglas, St. Johns County
 Tom Harmer, Town of Longboat Key
 Joshua Revord, St. Lucie County
 Dan Rowe, Bay County
 Andy Studt, Palm Beach County
 Janet Zimmerman, FIND

Chair Emeritus

Allen Ten Broek

President Emeritus

Deborah Flack

Ex Officio

USACE Jacksonville District, Milan Mora
 USACE Mobile District, Jenny Jacobson
 FDEP, Lainie Edwards
 Chuck Broussard, Weeks Marine
 Niki Desjardin, Ecological Associates, Inc.
 Thomas Pierro, Coastal Protection Engineering

FSBPA Staff

President: Pepper Uchino

Executive Director: Jackie Larson

Technical Director: Lisa Armbruster

Office/Conference Manager: Teri Besse

Florida Shore & Beach Preservation Association

PO Box 13146, Tallahassee FL 32317

Phone: (850) 906-9227

www.fsbpa.com • mail@fsbpa.com

CALENDAR OF EVENTS**FSBPA Conferences**

February 2-4, 2022

35th Annual Tech Conference

**Embassy Suites by Hilton,
 St. Augustine Beach, Florida**



*35th National Conference on
 Beach Preservation Technology*
 February 2-4, 2022 - St. Augustine Embassy Suites

October 5-7, 2022

2nd Annual Florida Resilience Conference

featuring the 65th FSBPA Annual Meeting

**Hyatt Regency Coconut Point
 Bonita Springs, Florida**

Other Dates of Interest

January 21-22, 2022

25th Annual Florida Marine Turtle Permit Holder Meeting

Safety Harbor Resort & Spa

Safety Harbor, Florida

March 29-31, 2021

ASBPA's Virtual Coastal Summit

Follow us on



[Back to Main Page](#)