



A Time for Thanks and Appreciation



November is traditionally the month of giving thanks, and FSBPA staff and Board of Directors would like to express our sincere thanks and gratitude to you, our members. Successfully advocating for healthy beaches and dunes for 65 years takes an unwavering commitment from a group of very special people, and we don't take your membership for granted. Your support allows us to work on the issues and policies that directly and indirectly affect Florida's beaches, including consistent state funding for the statewide beach management program and engagement with state and federal agencies throughout the year. We sincerely hope that you will consider renewing your membership and continuing your support of this association in 2023.

The [FSBPA annual membership business meeting](#) will take place on November 15, primarily to elect the next slate of officers and directors. The annual business meeting will be followed by a post-lan agency workshop with discussion from the USACE, FEMA, and FDEP. This is a great opportunity to hear from agency experts and discuss pressing issues related to Hurricane Ian recovery. Please join us if you can. Visit our website for more information about the [agenda](#) and registration details.

We are also working on the 2023 National Conference on Beach Preservation Technology program and professional networking opportunities for the event. A sneak-peek of the abstracts confirms another impressive conference program is in store for you, one you will not want to miss. The conference kicks off in just three months at the Luminary Hotel in downtown Fort Myers. Be sure to **SAVE THE DATE, February 1-3, 2023**. And, in the spirit of this month's theme of Thanksgiving, we are grateful to have an opportunity to bring the National Tech Conference to Lee County and support one of our longtime members as they work relentlessly on recovering from the impacts of Hurricane Ian.



Please stay safe, and we hope to see you at one of our upcoming meetings.

Inside this Edition



FWC's new guidelines for Imperiled Beach-nesting Birds to take effect in September 2023

....page 2



The Florida Ocean Alliance invites you to attend a special luncheon program focusing on Florida's vital blue economy

....page 3



US Army Corps of Engineers®

Southeast Florida's Regional Sediment Management Study Wraps Up with Interesting Results

....page 4



FDEP Office of Resilience and Coastal Protection Updates

....page 6



National Conference on Beach Preservation Technology

**February 1-3, 2023 * Fort Myers, Florida
Mark your calendar!**

FWC's new guidelines for Imperiled Beach-nesting Birds To take effect in September 2023



At its July meeting, the Florida Fish and Wildlife Conservation Commission (FWC) approved new Species Conservation Measures and Permitting Guidelines for four species of state-listed beach-nesting birds: the American oystercatcher, snowy plover, least tern and black skimmer.

The guidelines are designed to be a tool for landowners, consultants, agency partners and other interested parties on how to conserve these species. Recommended conservation measures and survey methods are included to promote actions that benefit these four species. These guidelines also include options for avoidance of take and options for permitting that minimize and mitigate unavoidable harm or harassment.

[ShoreMapper](#) is an online resource intended to support these Guidelines and assist in determining whether project activities will take place in an area important for imperiled beach-nesting birds.

The approved guidelines will take effect in September of 2023. In the meantime, the FWC will continue to issue permits for these species on a case-by-case basis. At this time, staff are working to provide training products for [Imperiled Beach-nesting Bird \(IBNB\) Permitted Monitors](#), develop outreach and training products, and to raise awareness with affected stakeholders. IBNB Permitted Monitors are trained, dedicated individuals with shorebird and seabird identification skills and avian survey experience. IBNB Permitted Monitors are qualified to assist FWC Incidental Take Permittees with minimizing and avoiding harm or harassment of imperiled beach-nesting birds during project activities.



To learn more about these guidelines and supporting information, please visit <https://myfwc.com/IBNB>. Anyone interested in becoming an Imperiled Beach-nesting Bird Permitted Monitor can register to receive additional information [here](#).

[Back to Main Page](#)



Sponsored by:



The Florida Ocean Alliance invites you to attend a special luncheon program focusing on Florida's vital blue economy.

Join us on November 18 from 11:00 AM - 2:00 PM aboard Royal Caribbean Cruises' Liberty of the Seas at Port Everglades Terminal #19, Ft. Lauderdale, FL

On November 18, 2022, the Florida Ocean Alliance (FOA) will host leaders in the marine and maritime industries, research and academia, and NGOs for discussions on building a sustainable future for marine businesses and our ocean and coastal resources. Our invited guest speaker is Rick Spinrad, Under Secretary of Commerce for Oceans and Atmosphere and NOAA Administrator.

Join the FOA Board of Directors and members, our sponsors Royal Caribbean Cruises, Port Everglades, Port Everglades Association, Port Tampa Bay, Miami-Dade County and all our sponsors and friends for networking, a luncheon, and silent auction aboard Royal Caribbean's Liberty of the Seas at Port Everglades in Fort Lauderdale.

By attending or sponsoring the event, you will support Florida Ocean Alliance initiatives to protect Florida's marine and coastal assets and help build a sustainable future for our blue economy.

Seating is limited! Purchase tickets or make table reservations soon. For sponsorship information, contact Martha Lord at mlord.foa@gmail.com.

Buy Tickets

Sponsor

Reserve a Table

Share This Email

Share This Email

Share This Email

Subscribe to Florida Ocean News

Back to Main Page

Southeast Florida's Regional Sediment Management Study Wraps Up with Interesting Results



US Army Corps
of Engineers®

By Laurel Reichold and Matthew Schrader, USACE SAD Regional Sediment Management, Center of Expertise and L.C. van Rijn, J. Marsh, L. Perk and N. Geleynse of Environmental Tracing LLC and WaterProof Marine Consultancy LLC

The U.S. Army Corps of Engineers (USACE) is wrapping up the Southeast Florida (SE FL) Sediment Morphodynamics study (SEFMOD), performed by Environmental Tracing LLC and subcontractor WaterProof Marine Consultancy LLC. The study took a Regional Sediment Management (RSM) approach covering ~80 miles of shoreline as well as detailed study efforts at Palm Beach Harbor, Port Everglades Harbor, Baker's Haulover Inlet and Miami Harbor. The main goals were to identify more sustainable solutions to improve sediment management for the region and to identify solutions that would decrease management costs. Federal and non-Federal investments in maintaining SE FL beaches and navigable waterways can be as high as tens of millions of dollars annually, dictated predominately by the need to remove shoaled sediment from Federal Navigation Channels and conduct renourishment of eroded beaches.

Over the years, RSM efficiencies have been implemented in SE FL guided by efforts such as inlet management plans and sediment budgets, by-passing of sediment, design and construction of groins and breakwaters, and maximizing beneficial use of dredge material. Through measurements and modeling, this study investigated natural sediment transport along and across SE FL, to identify the controlling mechanisms and the degree and interplay of these forces [FIGURE 1]. The study team implemented a large-scale field data collection campaign which included multiple hydrodynamic and sediment transport sensors as well as performed release of sediment (sand and silt) tracers to validate a 3-tiered (regional, meso, and local) Delft3D™ nested model for the region.

Among the many interesting results of the study is how unique and influential the complex bathymetry and meso- to macro-scale of oceanic currents are to SE FL inlets and beaches. Though the presence and overall appearance of the Florida Current (FC) is widely known, the spatial extent, intensity, and frequency of its nearshore manifestation is quite unknown, and an accurate representation of the FC via local numerical modeling had not been accomplished prior to this study. Numerical modeling is needed to fill the gaps between existing and planned monitoring data and allow for developing and simulating dredging and beach nourishment scenarios under different hydrodynamic conditions within the study area. The first of its kind, this study provides simultaneous hydrodynamic and sediment transport data both alongshore and cross-shore into deep water over a 10-month period for the entire study area. Results captured spin-off eddies occurring on the western side of the FC initiated by horizontal shear significantly contributing to the variability in nearshore circulation. Wave-driven longshore transport in the shallow coastal zone between the shoreline and approximately 7.5 m depth was found to predominantly govern the shoreline erosion and

sedimentation observed, while also explaining the rapid shoaling rates encountered at Palm Beach Harbor. Cross-shore transport during major storms was found to be the prime driver of shoreline erosion for Miami-Dade County beaches, where the localized effects of the Florida Current (FC) are less dominant in nearshore areas. Inlet current stratification (different flow directions over the water column) were successfully represented by the 3-D Delft3D model developed for Port Everglades Harbor. The calibrated 3-D model can be used for numerical tracking of predicted sediment plume and time developments of the suspended sediment concentrations throughout the project area, including the nearshore and offshore benthic systems.

This study set out to achieve a clear understanding of the natural system and processes that drive sediment transport so that sustainable management approaches could be identified and implemented, and the team is very happy with the results and model calibration demonstrated so far. The integral systems approach provides a firm and quantitative basis for coastal managers to make informed decisions now and into the future. USACE looks forward to sharing more information and the final reports once they are completed. For more information, please contact Laurel Reichold by email at laurel.p.reichold@usace.army.mil.

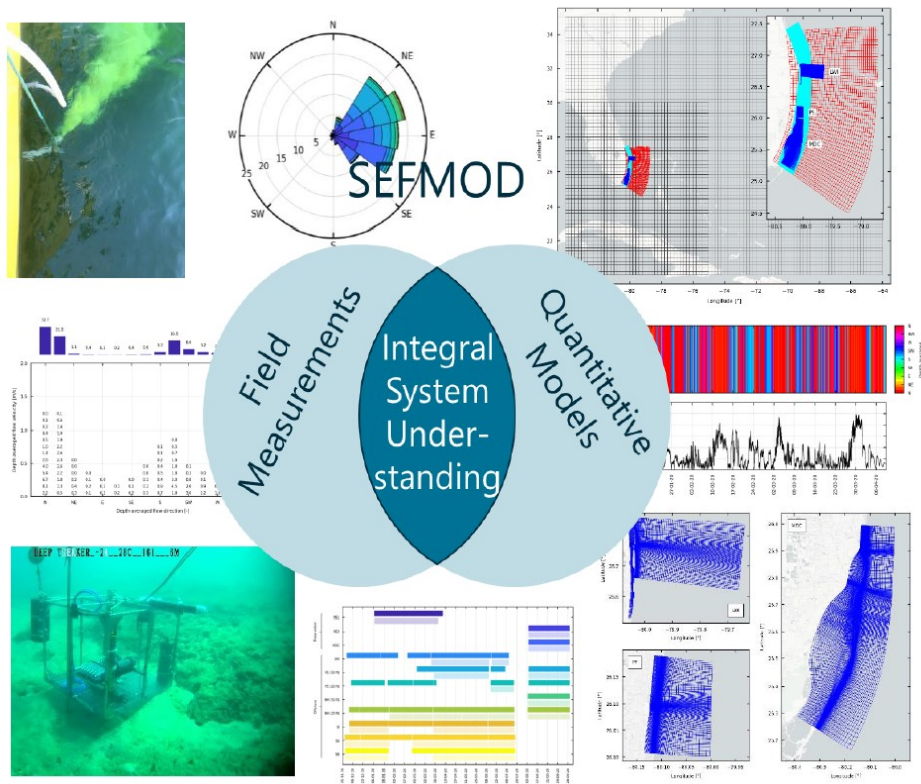


FIGURE 1. SEFMOD approach, comprising field measurements and quantitative modeling.

FDEP Office of Resilience and Coastal Protection Updates



Hurricane Ian Damage Widespread

Hurricane Ian was a large powerful Category 4 storm that made landfall at Cayo Costa Island in Lee County and traveled across the state. Widespread heavy rains, flooding, high winds and tornadoes caused inland damage across the Florida peninsula. Ian weakened to a tropical storm as it exited the Florida peninsula in Volusia County then quickly restrengthened to a category 1 just offshore of Volusia and Flagler counties. As a result, heavy beach and dune erosion occurred on both the Gulf and Atlantic coasts.



The Florida Department of Environmental Protection has been active in response activities across all divisions and offices. The beaches programs have been almost entirely devoted to beach assessments and sand source identification since landfall. The Coastal Construction Control Line (CCCL) Program has been busy assisting local governments and coastal property owners in emergency permitting. Additionally, the CCCL Program has established a temporary field office in Volusia County. Emergency Final Orders for Hurricane Ian are located at the following site: <https://floridadep.gov/hurricane>.

The Beaches Field Services Program conducted post-storm windshield surveys and has been active in assisting the CCCL Program with emergency permitting. The Coastal Engineering and Geology Program conducted post-storm damage assessments and has been working with counties to identify upland sand sources adequate for emergency use and is now drafting the Preliminary Hurricane Ian Post-Storm Beach Conditions and Coastal Impact Report. The Beaches, Inlets and Ports Program (BIPP) assisted the U.S. Army Corps of Engineers in federally authorized beach project sand loss assessments and the Federal Emergency Management Agency in non-federal beach project sand loss assessments, and is now drafting the Hurricane Ian Storm Recovery Plan for Florida's Beach and Dune System.

REMINDER to local governments and their agents to submit estimated sand losses of their projects and to provide estimated cost per cubic yard of sand for a particular project to BIPP via email or the [storm data submission link](#). The beaches programs also contracted helicopter oblique high-resolution videography of the beach-dune system along the Gulf Coast flown on Oct. 1 and 2 that is available on the [Florida Geographic Information Office](#) website.

Additional information on Hurricane Ian and the department's Emergency Final Orders can be found on the [DEP Hurricane Information](#) webpage.

[Back to Main Page](#)



FLORIDA SHORE & BEACH PRESERVATION ASSOCIATION

A League of Cities and Counties on Beach and Coastal Issues

Annual Membership Business Meeting and Hurricane Ian Post-storm Response and Recovery Workshop

**2300 North Jog Road, 1st Floor
West Palm Beach, FL 33411
Tuesday, November 15, 2022
9:30 a.m. - 3:30 p.m.**

The FSBPA Annual Membership Business Meeting will take place on November 15, 2022, from 9:30 a.m. – 9:45 a.m. at the Palm Beach County government offices (Vista Center) on 2300 Jog Road, West Palm Beach, FL. A Hurricane Ian post-storm response and recovery workshop will take place immediately following the business meeting. Members will hear discussion from the USACE Jacksonville District, FEMA, and the Florida Department of Environmental Protection and have an opportunity to ask questions of our beach management agency partners. [Click here for the agenda.](#)

The following are a few meeting logistics for planning purposes:

- Parking is available to meeting attendees at no cost. Please use the open parking lot on the north side of the Vista Center.
- Lunch will be on your own. There are restaurants within walking distance, and a Publix is nearby. Registration: There is a \$25 fee for FSBPA members to attend. [Click here to register.](#)

Lodging: There are hotels within a mile of the Vista Center, including:

[Hampton Inn West Palm Beach Florida Turnpike](#)

2025 Vista Pkwy, West Palm Beach, FL 33411•(561) 682-9990

[Fairfield Inn & Suites by Marriott West Palm Beach](#)

2045 Vista Pkwy, West Palm Beach, FL 33411•(561) 227-3040

Back to Main Page

Shoreline

A monthly electronic publication of the Florida Shore & Beach Preservation Association.

Officers**Chair**

Charlie Hunsicker, Manatee County

Vice-Chair

Emily Lewis, Charlotte County

Secretary-Treasurer

Steve Boutelle, Lee County

Past-Chair

Don Donaldson, Martin County

Directors

John Bishop, Pinellas County
 Marina Blanco-Pape, Miami-Dade County
 Damon Douglas, St. Johns County
 Tom Harmer, Town of Longboat Key
 Joshua Revord, St. Lucie County
 Dan Rowe, Bay County
 Andy Studt, Palm Beach County
 Rob Weber, Town of Palm Beach
 Janet Zimmerman, FIND

Chair Emeritus

Allen Ten Broek

President Emeritus

Deborah Flack

Ex Officio

USACE Jacksonville District, Milan Mora
 USACE Mobile District, Jenny Jacobson
 FDEP, Lainie Edwards
 Chuck Broussard, Weeks Marine
 Niki Desjardin, Ecological Associates, Inc.
 Thomas Pierro, Coastal Protection Engineering

FSBPA Staff

President: Pepper Uchino

Executive Director: Jackie Larson

Technical Director: Lisa Armbruster

Office/Conference Manager: Teri Besse

Florida Shore & Beach Preservation Association
 PO Box 13146, Tallahassee FL 32317
 Phone: (850) 906-9227
www.fsbpa.com • mail@fsbpa.com

CALENDAR OF EVENTS**FSBPA Events**

November 15, 2022 - 9:30 pm to 3:30 pm

**FSBPA Annual Business Meeting and
 Hurricane Ian Post Storm Recovery**

[Click here for more info and cost](#)

February 1-3, 2023

36th National Conference on Beach Preservation Technology

Luminary Hotel & Co., Autograph Collection

Fort Myers, FL

Other Events

November 18, 2022 - 11 am to 2 pm

**Florida Ocean Alliance
 Florida's Blue Economy - Building a
 Sustainable Future**

**Royal Caribbean Cruises'
 Liberty of the Seas**

**Port Everglades Terminal #19
 Fort Lauderdale, FL**

[Click here for more info and cost](#)

Florida's Blue Economy - Building a Sustainable Future Leadership Meeting & Luncheon
 Join Us November 18, 2022

The Florida Ocean Alliance invites you to attend a special luncheon program focusing on Florida's vital blue economy.

Join us on November 18 from 11:00 AM - 2:00 PM aboard Royal Caribbean Cruises' Liberty of the Seas at Port Everglades Terminal #19, Ft. Lauderdale, FL

On November 18, 2022, the Florida Ocean Alliance (FOA) will host leaders in the marine and maritime industries, research and academia, and NGOs for discussions on building a sustainable future for marine businesses and our oceans and coastal resources. Our invited guest speaker is Rick Spitznagel, Under Secretary of Commerce for Oceans and Atmosphere and NOAA Administrator.

Join the FOA Board of Directors and members, our sponsors Royal Caribbean Cruises, Port Everglades, Port Everglades Association, Port Tampa Bay, Miami-Dade County and all our sponsors and friends for networking, a luncheon, and silent auction aboard Royal Caribbean's Liberty of the Seas at Port Everglades in Fort Lauderdale.

By attending or sponsoring the event, you will support Florida Ocean Alliance initiatives to protect Florida's marine and coastal assets and help build a sustainable future for our blue economy.

Seating is limited! Purchase tickets or make table reservations soon.
 For sponsorship information, contact Martha Lord atmlord@foa@gmail.com

[Buy Tickets](#) [Sponsor](#) [Reserve a Table](#)

[Share This Email](#) [Share This Email](#) [Share This Email](#)

[Subscribe to Florida Ocean News](#)

Follow us on



[Back to Main Page](#)