

Shoreline

September 2008

Bureau of Beaches and Coastal Systems Report: Sand Source Inventory

By Robert Brantley, P.E.

Pursuant to Section 161.144, Florida Statutes, the Legislature has mandated that the Department of Environmental Protection (FDEP) "...shall develop and maintain an inventory of identified offshore sand sources as part of the regional elements of its comprehensive long-term beach management plan. Offshore sand sources in state or federal waters which are identified for potential, proposed, or permitted use shall be clearly mapped or otherwise noted and readily available for public review."

FDEP has compiled a preliminary inventory and is developing the specifications for a comprehensive inventory and the methods for maintaining a comprehensive inventory. The preliminary inventory lists identified offshore sand sources using existing information contained in the Department's Reconnaissance Offshore Sand Search (ROSS) database.

[Read Full Story](#)

2009 National Conference on Beach Preservation Technology

[Call for Papers](#)
[Register for the Meeting](#)
[Make Reservations at TradeWinds](#)

Palm Beach DERM Status Report

Job Opportunities

2008 FSBPA Annual Meeting Wrap-up

By David Tait
Executive Director



Despite the menacing presence of Hurricane Ike off the west coast of Florida, the 2008 FSBPA Annual Meeting at South Seas Island Resort in Captiva went off without a hitch. In fact, by the time attendees sat down for the opening session on Wednesday afternoon, most of the squally-weather, which had assailed the island in the early part of the week, had subsided.

To say that we were pleased at the hardiness of FSBPA attendees would be an understatement. Prior to the start of the meeting we were very concerned that the proximity of Hurricane Ike to Captiva might cause a rash of cancellations. In fact, after receiving only a few cancellations, we ended up with 225 attendees. And those folks heard some excellent presentations, including a thought-provoking panel discussion on sea level rise.

On behalf of the FSBPA board of directors and staff, I offer our heartfelt thanks to all who braved the weather to join us in Captiva.

[Read Full Story](#)



US Army Corps
of Engineers

USACE Jacksonville District Project Status

Feasibility Studies:

- St. Johns County – Beach-fx economic modeling has begun. Bathymetric surveys of offshore borrow areas are planned for mid-summer to refine borrow source delineations.
- Volusia County - on hold. No non-Federal...

[Read Full Story](#)



Alison Hagerup's daughter, Carly Stewart, and Lee County Commissioner Bob Janes at the dedication of the Alison Hagerup Beach Park on Captiva Island

[More Photos](#)

About Florida Shore & Beach Preservation Association

[Calendar of Events](#)

[About Shoreline](#)

[FSBPA Website](#)

Bureau of Beaches and Coastal Systems Report

By Robert Brantley, P.E.

Pursuant to Section 161.144, Florida Statutes, the Legislature has mandated that the Department of Environmental Protection (FDEP) "...shall develop and maintain an inventory of identified offshore sand sources as part of the regional elements of its comprehensive long-term beach management plan. Offshore sand sources in state or federal waters which are identified for potential, proposed, or permitted use shall be clearly mapped or otherwise noted and readily available for public review."

FDEP has compiled a preliminary inventory and is developing the specifications for a comprehensive inventory and the methods for maintaining a comprehensive inventory. The preliminary inventory lists identified offshore sand sources using existing information contained in the Department's Reconnaissance Offshore Sand Search (ROSS) database. ROSS contains information on the location of identified offshore sand sources and the related beach management project that investigated and identified the sand source. The preliminary inventory will not provide sufficient information to formulate regional sediment management strategies. The document will be released by FDEP before October 30, 2008.

The comprehensive offshore sand source inventory (OSSI) will be a web-based electronic document readily available for downloading or printing from the ROSS website. It will be linked to the ArcIMS maps of Florida on the ROSS website. OSSI will categorize each site as a potential, proposed or permitted source of beach-compatible sediment and contain information on location, volume, sediment character, and environmental resources. The information will be obtained from a review of existing published sources. New information will be added as future sand search investigations are completed and submitted to FDEP. In conjunction with FDEP's Strategic Beach Management Plan, OSSI will provide sufficient information to formulate regional sediment management strategies. The document will be released by FDEP before June 30, 2009.

[Back to Main Page](#)

2008 FSBPA Annual Meeting Wrap-up

By David Tait
Executive Director

Despite the menacing presence of Hurricane Ike off the west coast of Florida, the 2008 FSBPA Annual Meeting at South Seas Island Resort in Captiva went off without a hitch. In fact, by the time attendees sat down for the opening session on Wednesday afternoon, most of the squally-weather, which had assailed the island in the early part of the week, had subsided.

To say that we were pleased at the hardiness of FSBPA attendees would be an understatement. Prior to the start of the meeting we were very concerned that the proximity of Hurricane Ike to Captiva might cause a rash of cancellations. Instead, after receiving only a few cancellations, we ended up with 225 attendees. And those folks heard some excellent presentations, including a thought-provoking panel discussion on sea level rise.

On behalf of the FSBPA board of directors and staff, I offer our heartfelt thanks to all who braved the weather to join us in Captiva.

[Annual Meeting Slideshow](#)

Election of Officers and Directors

FSBPA bid farewell to long-time board members, Richard Bouchard of St. Lucie County and Bruce St. Denis of Longboat Key, who were not eligible for re-election since both had served two full three-year terms.

Elected to replace them were Virginia Barker of Brevard County and Charlie Hunsicker of Manatee County. Matt Mooneyham, who was appointed by the board last year to fill the unexpired term of former director Kriss Titus, was elected to his first full term. Jody Armstrong of the Town of Redington Shores, who was filling the unexpired term of former director J.J. Beyrouiti, was also elected to her first full term. Nicole Elko of Pinellas County was elected to fill the unexpired term of the late Alison Hagerup.

Don Donaldson of Martin County was elected Chair; Brian Flynn of Dade County was elected Vice Chair; and Jonathan Gorham of Indian River County was elected Secretary-Treasurer.

2008 FSBPA Annual Awards Banquet

The FSBPA Annual Awards Banquet honored five Floridians who have meant a great deal to Florida's beaches.



FSBPA President Stan Tait says a few words following the presentation of the first Stan Tait Award



Steve Boutelle of Lee County receives a check from Col. Paul Grosskruger for the Gasparilla Beach Nourishment Project

[Next Page](#)



Awards Banquet Head Table

(Back Row) Mike Barnett, Bureau of Beaches and Coastal Systems; Don Donaldson, FSBPA Chair; Col. Paul Grosskruger, District Engineer, USACE Jacksonville; Steve Boutelle, outgoing FSBPA Chair.



Stan Tait Award

Debbie Flack and Stan Tait present the first Stan Tait Award, FSBPA's highest award, posthumously to Alison Hagerup. The award was received by Alison's daughter and grandson, Carly and Tadem Stewart. The citation reads: "In loving memory of your years of guidance and dedication to FSBPA, and your incomparable commitment to the beaches of Captiva"



Per Bruun Distinguished Service Award

Debbie Flack and Steve Boutelle present the Per Bruun Distinguished Service Award to Phil Flood of the South Florida Water Management District. The citation reads: "You represent all that is good in Florida's successful beach management program—leadership and commitment that will not be forgotten"



Legislative Award

Debbie Flack presents the Legislative Award for Representative Stan Mayfield to Jonathan Gorham on his behalf. Rep. Mayfield was unable to attend. The citation reads: "In recognition of your outstanding legislative record of support for the protection and management of Florida's beaches"



Local Government Award

Debbie Flack presents the Local Government Award to Gary Appelson of the Caribbean Conservation Corporation. The citation reads: "In recognition of your long-standing commitment to Martin County's beaches and other coastal resources, and to the success of FSBPA"



Environmental Award

Debbie Flack and Virginia Barker present the Environmental Award to Gary Appelson of the Caribbean Conservation Corporation. The citation reads: "For your wisdom and quiet leadership in guiding Florida's beach management and regulatory programs down a path of increasing awareness and sensitivity to other coastal and marine resources"

Jacksonville District's Project Status



Feasibility Studies:

- St. Johns County – Beach-fx economic modeling has begun. Bathymetric surveys of offshore borrow areas are planned for mid-summer to refine borrow source delineations.
 - Volusia County - on hold. No non-Federal funding.
 - St. Lucie County - cultural resources work and State Historic Preservation Officer coordination are being completed by the Corps. Field work was completed in early June. A summary report is expected by September. The non-Federal sponsor will be completing the remainder of the study work.
- Flagler County – The damage element and structure inventory has been completed and Beach-fx economic modeling has begun. Parking, public access, and shore protection structure surveys were completed in July. A draft Notice of Intent to prepare an EIS has been prepared. Shoreline process data collection and modeling has begun.

Other Major Planning Reports:

- The Brevard County Mid Reach General Reevaluation Report (GRR) is in the draft report preparation phase. The project team continues to prepare the draft report, which is scheduled for technical review in September 2008.
 - The North Boca Raton Second Periodic renourishment revised final Limited Reevaluation Report was prepared in response to comments from the Corps' South Atlantic Division (SAD). The report package was approved by SAD in June 2008. Plans and specs are under review by SAJ.
 - Jupiter/Carlin Shore Protection Project - Palm Beach County has started a 934 report/NEPA document for Jupiter/Carlin Segment to extend Federal participation for the next renourishment.
 - Guidance has been requested from higher authority on the review process for the Draft Ft. Pierce Shore Protection project GRR completed by the non-Federal Sponsor. The GRR seeks an additional 50-years of Federal participation in the project as well as the inclusion of groins to the project area.
- Broward County Shore Protection project - Segment I (north county line to Hillsboro Inlet) - GRR and NEPA document - Initiation of preparation of the GRR and NEPA document for initial construction of this segment is awaiting non-Federal funds to be provided to the Jacksonville District. A Design Agreement was executed in 2006 with the city of Deerfield Beach in order for the Jacksonville District to initiate preparation of the document. Segment II – GRR Addendum and NEPA document – Sponsor has initiated their GRR Addendum for the upcoming renourishment.

Other:

The Brevard County, Florida Independent Coastal Expert Letter Report has been revised per SAD, HQ, and Planning Center of Expertise (PCX) comments. The revised report is undergoing Agency Technical Review (ATR) by the PCX. Following this, the report will undergo Policy Review and concurrent review by HQ and the Assistant Secretary of the Army for Civil Works.

In Dade County work was funded for a section 227 project at 63rd Street in Miami to be reinitiated in August 2008. A design and build contract is being evaluated in cooperation with the Department of Environmental Resources Management (DERM) and Reef Innovation, Inc., for potential use of Reef Balls. Genesis modeling will need to be done to determine the minimum structure footprint and the exact project location.

Borrow Site Investigations:

- Martin County and Sarasota County borrow area investigations are underway. Bathymetric survey field work is complete for Martin County. In addition, the Corps is beginning to evaluate borrow area alternatives offshore of Martin and St. Lucie Counties. Bathymetric surveys for Sarasota have recently been completed, and further core borings will be taken to better define areas suitable for dredging.
 - The Pinellas County, Sand Key borrow area investigation is underway. Geotechnical work and surveys will be completed this Summer.
 - Hard bottom mapping for Martin County is scheduled for this summer.
- Plans & Specs have begun in order to utilize all remaining domestic sand sources offshore of Dade County as directed by the Assistant Secretary of the Army (Civil Works) in his 10 December 2007 memo to the Director of Civil Works recommending a three-tiered approach to meet Dade County's beach renourishment needs.

Regional Sediment Management:

Three complete regional sediment budgets for the sandy coast of Florida are available. A large push is being made to participate in the Gulf of Mexico RSM initiative, utilizing existing stakeholders to assist in a regionalization of information and technology.

The Southeast Atlantic Regional Sediment Source Study for Florida has been completed by GEC and Halcrow for SAJ. The report is currently available on: <http://planning.saj.usace.army.mil/rsm>. This Regional Sediment Management report approximates the volume of sand that remains offshore of Palm Beach, Broward and Miami-Dade Counties and compares that volume with the amount required by Federal and non-Federal nourishment projects over the next 50 years. This report marks collaboration between the State of Florida, non-Federal sponsors, private industry, and the USACE to evaluate the sustainability of Florida's current beach nourishment program.

Further direction from HQ on the Dade County Letter Report – Alternative Borrow Source Investigation has indicated that a Regional Sediment Management (RSM) plan to address long term needs along Florida's Atlantic coast will serve as an addendum to the Letter Report. The scope of work for this plan is currently being finalized and work is expected to begin early in FY09.

Construction:

- The Lee County, Captiva Island FCCE Rehabilitation Project is complete.
- Initial nourishment of the Nassau County Shore Protection Project has begun with completion expected by late summer 2008. At the time of writing sand has been placed from the north end of the project to south of DEP monument R-27.

[Back to Main Page](#)



[Back to Main Page](#)

August 2008

Status Report



The engineering & design scope of work and FDEP Grant Agreement will be presented to the BCC for approval on September 9. Staff continues to work with the ACOE on the development of the Section 934 report.

Jupiter/Carlin Erosion

Control Project: A second set of ADCP (Acoustic Doppler Profiler)

instruments were deployed off Jupiter Inlet. Field data collected during the first deployment has been processed and the model is being calibrated with the project area's hydrodynamics. Documentation of the natural resources within the project area and the present beach conditions were completed for inclusion within the permit application.

Tropical Storm Fay Update: Wave action changed the shape of the beaches by moving sand from the dry berm out to the nearshore sand bar. The beaches retreated 20-30 feet and lost an average of 2.5 feet in elevation. Post-storm waves have been moving some of that sand along shore and back up to the dry beach, but full recovery is not expected for some areas. Staff toured FEMA and USACOE representatives shortly after the storm. With the loss of sand came a corresponding loss of incubating sea turtle nests. Approximately 20-50% of the remaining nests were lost, which represents 10-20% of the nesting for the entire 2008 season.

South Palm Beach: The final engineering & design scope of work for the erosion control project was submitted to the FDEP for approval before consideration by the BCC. Further dune restoration funding was requested from the FDEP as 4 to 5 feet of vertical beach was lost during the storm and 95% of the winter 2008 dune restoration project has washed out since its construction.



Juno Renourishment: A Biological Opinion from USFWS is in the final stages of review and draft construction contract plans and technical specifications have been completed. Construction is expected to begin in December 2008. Of the estimated project cost of \$12M, the Federal Emergency Management Agency (FEMA) will contribute \$3M to offset erosion caused by hurricane Frances. FDEP is preparing a funding agreement to cost share up to 50% of the local share of construction costs.

Singer Island Erosion Control Project: The numerical modeling has been completed to determine the anticipated shoreline response to the modified project design (figure). As requested by the permitting agencies, the design modification will help expedite the permitting process by eliminating impacts to the exposed hardbottom in the southern end of the project area. The results of the numerical modeling and hardbottom characterization report have been sent to FWS to initiate drafting the Biological Opinion (BO), a permit requirement. A formal response to DEP Request for Additional

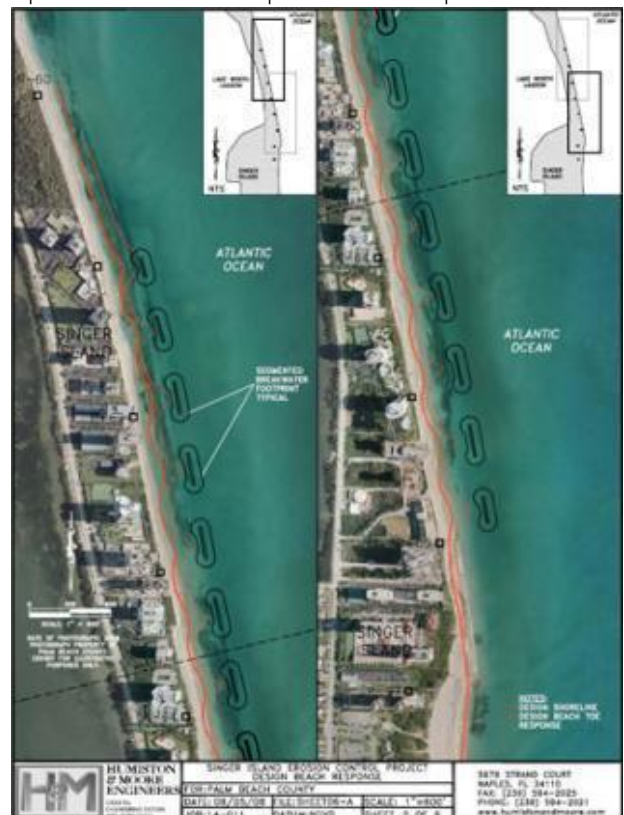
South Lake Worth Inlet: Maintenance

Dredging: A seagrass survey of the impacts from the dredging project showed initial recovery of the seagrass in the impact area. This project was funded by FIND (58%), Palm Beach County (25%), DEP (11%), and the City of Boynton Beach (5%). **Sand Transfer Plant Construction/Jetty**

Rehab/Seawall Reconstruction: 95% construction plans for the modified sand transfer plant are in review. ERM received a completeness letter from DEP for the jetty rehab *de minimus* exemption. The SFWMD issued a permit exemption for the seawall construction at Bird Island. An NWP 3 from the Corps of Engineers is anticipated for the seawall and the jetty work. Funding for this project comes from DEP and Palm Beach County.

Sea Turtle Lighting Compliance: Lighting inspections have been conducted for all of Palm Beach County. Follow-up inspection will be conducted throughout the sea turtle nesting season. An estimated 6,300 disoriented sea turtle hatchlings have been reported so far this season.

Jupiter/Carlin Renourishment:



Information (RAI)#2 was submitted to the permitting agencies. DEP is preparing an amendment to the existing Singer Island grant to encumber the \$4M appropriated in fy07-08 for construction. To date, the City of Riviera Beach has not executed the Interlocal Agreement for the 20% local share. An executed agreement must be received by September 23rd in order to prevent any construction delays once a permit is issued.

Reef Monitoring and Management: The Reef Research Team surveyed Ragg's Reef, Ocean Ridge South, Murphy's Barge II (aka Runaway Barge) and MidReef this month. Ragg's is progressing in the amount of benthic cover growing on the boulders; there are now 3 different genera of grogonians present. White margates were present, an unusual sighting for our county. Murphy's Barge II is still in relatively good condition and home to a myriad of fish, including a large goliath grouper. Staff assisted FFWCC in monitoring local sites for the Florida Reef Resiliency Program sponsored by FDEP and the Southeast Florida Coral Reef Initiative.

Annual Marine Contract: Upon approval by the BCC in September, initial work will include the breakwater projects along the mangrove areas north of the Ocean Avenue Bridge in Ocean Ridge and Boynton Beach and the Juno Beach Nearshore Reef Mitigation to be constructed just north of the City of Riviera Beach's Municipal Beach in 8-12' of water.

Artificial Reef Permitting: Seagrass surveys have been completed for five inshore proposed artificial reef sites. Limited seagrass was found on two of the five sites. USACE and FDEP permits have been issued for 13 offshore sites which encompass about 9,000 acres.



Chain of Lakes Restoration

Project: One of the goals of the project was to restore fisheries and wildlife habitat. While inspecting the project site, staff came upon a young fisherman who had just caught a large mouth bass, which was a good sign that the fisheries are returning to the lake.

Lake Worth Lagoon Initiative (LWLI): Work continued on establishment of the framework for LWLI's Steering Committee, which will consist of an Executive Committee of lead environmental agencies and Committee Chairs representing major areas of emphasis: Water, Habitat, Pollution Prevention and Public Outreach. The LWLI will coordinate local, state and federal agencies' activities that affect the LWL, heighten awareness of LWL's resources and issues and carry out the mission & projects outlined in the LWL Management Plan.

Lake Worth Lagoon Partnership Grant Program (LWLPGP):The LWLPGP Selection Committee will convene on September 5th to allocate \$700,000 in State funds to projects that benefit habitat and water quality in the Lake Worth Lagoon and Chain of Lakes. Vying for funding this fiscal year: (1) Lake Worth 2nd Ave North Outfall Water Quality Improvement: \$210,000; (2) City of WPB Monroe and Monceaux Stormwater Improvements: \$450,000; (3) City of WPB Stub Canal Stormwater Improvements: \$500,000; (4) PBCERM South Cove Restoration Phase II: \$419,600; (5) Golfview Heights/Belvedere Homes Phase I: \$500,000; and (6) PBC

Parks Department Peanut Island Lagoon Enhancement: \$214,000; PBC Parks Department John Prince Park Campground Sewer Project: \$200,000.

Oyster Monitoring: The first quarterly data report showed that oysters at the MacArthur site, while being larger, have lower condition index and reproductive potential compared to the Snook Island and Ibis Island sites. Also, recruitment is limited at the MacArthur site, but the oysters that do settle are similar in size to those at the other sites indicating conditions for early growth are good. The data also showed that the Snook Island site was the most productive site among the three.

South Cove Natural Area: The issuance of FDEP's Consolidated Notice of Intent to Issue Environmental Resource Permit for the South Cove Restoration Project has allowed the adjacent property owners to formally object and file a petition requesting an administrative hearing. If FDEP finds the petition to have substance, a hearing will be required prior to issuance of the permit.

Lake Worth Lagoon Habitat Classification:

The 2007 Project mapped essential fish habitats, specifically seagrasses, mangroves, and oyster reefs. Seagrass beds covered 1,688 acres or 21.74% of the LWL. This is a slight increase of 42 acres over the 2001 calculation. Mangrove habitat continues to expand from 248 acres in 1985, to 264 acres in 2001, and 283 acres in 2007. This 14% increase, mostly in the northern and central portions of the lagoon, are associated with the County's restoration projects; Munyon Island, Peanut Island, John's Island and Snook Islands. In



addition to mangroves and seagrasses, 4.2 acres of oyster reefs and 1.5 acres of spartina wetlands were identified during this large scale mapping project.

For more information on Palm Beach County environmental restoration projects, please visit: <http://www.co.palm-beach.fl.us/erm/>



Calendar of Events

October 15-17, 2008

ASBPA Fall Conference
Holiday Inn Chicago Mart Plaza
www.asbpa.org

February 16-18, 2009

10th Annual CIRP Workshop
TradeWinds Island Resorts
St. Petersburg Beach, FL

February 18-20, 2009

National Conference on Beach Preservation Technology
TradeWinds Island Resorts
St. Petersburg Beach, FL

April 6-10, 2009

National Hurricane Conference
Austin Convention Center
Austin, TX
www.HurricaneMeeting.com

September 16-18, 2009

FSBPA Annual Meeting
Amelia Island Plantation
Amelia Island, FL

[Back to Main Page](#)



**A monthly electronic publication of the
Florida Shore & Beach Preservation Association**

President: Stan Tait

Executive Director & Shoreline Editor: David Tait

Director of Governmental Affairs: Debbie Flack

Assistant Director of Governmental Affairs: Lisa Armbruster

Phone: (850) 906-9227

Fax: (850) 906-9228

Send e-mail address changes to:

mail@fsbpa.com

**Florida Shore & Beach Preservation Association
2952 Wellington Circle, Tallahassee, FL 32309
Phone: (850) 906-9227 • Fax: (850) 906-9228
www.fsbpa.com • mail@fsbpa.com**

[Back to Main Page](#)